



EBI ONI KE

(FAMILIES OF PLASTICS)

2004-2012

OLANIYI RASHEED AKINDIYA AKIRASH



DRIVE PROTECTED, MIXED MEDIA
SCULPTURE, 63X27X27 ", 2004



**EVERYDAY OF OUR LIFE, MIXED
MEDIA SCULPTURE, 63X20X20", 2004**



www.artwithakirash.com

VALLEY OF DEATH, MIXED MEDIA
SCULPTURE, 59X19X19", 2004



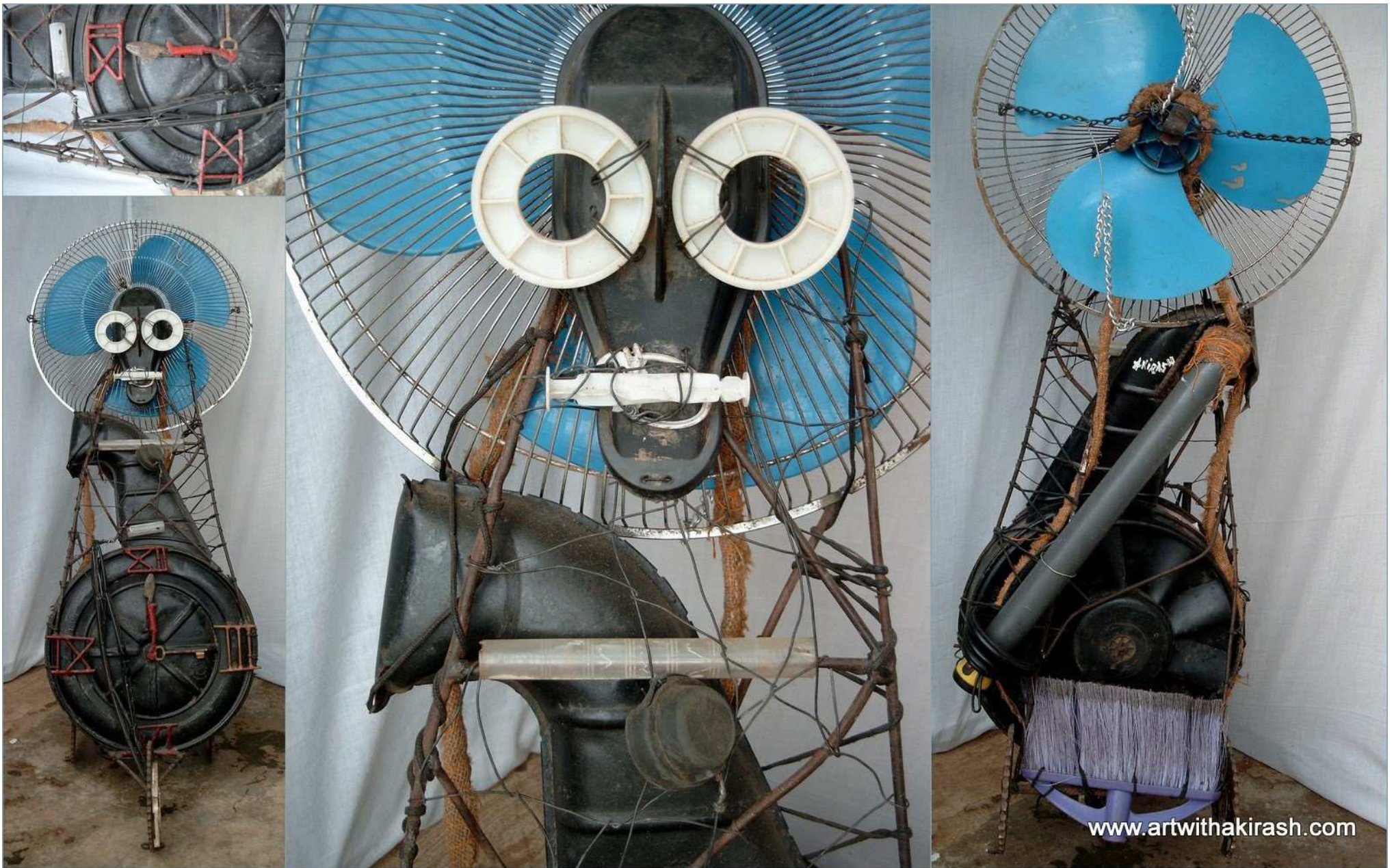
www.CIVILIZATION.com, MIXED MEDIA
SCULPTURE INSTALLATION, 87X62X28",
2005



G-8, MIXED MEDIA
SCULPTURE, 54X21X17", 2005



MAGIC MOMENTS, MIXEDMEDIA
SCULPTURE, 52X79X40", 2006



**STOPPED WATCH, MIXED MEDIA
SCULPTURE, 50X26X18", 2005**



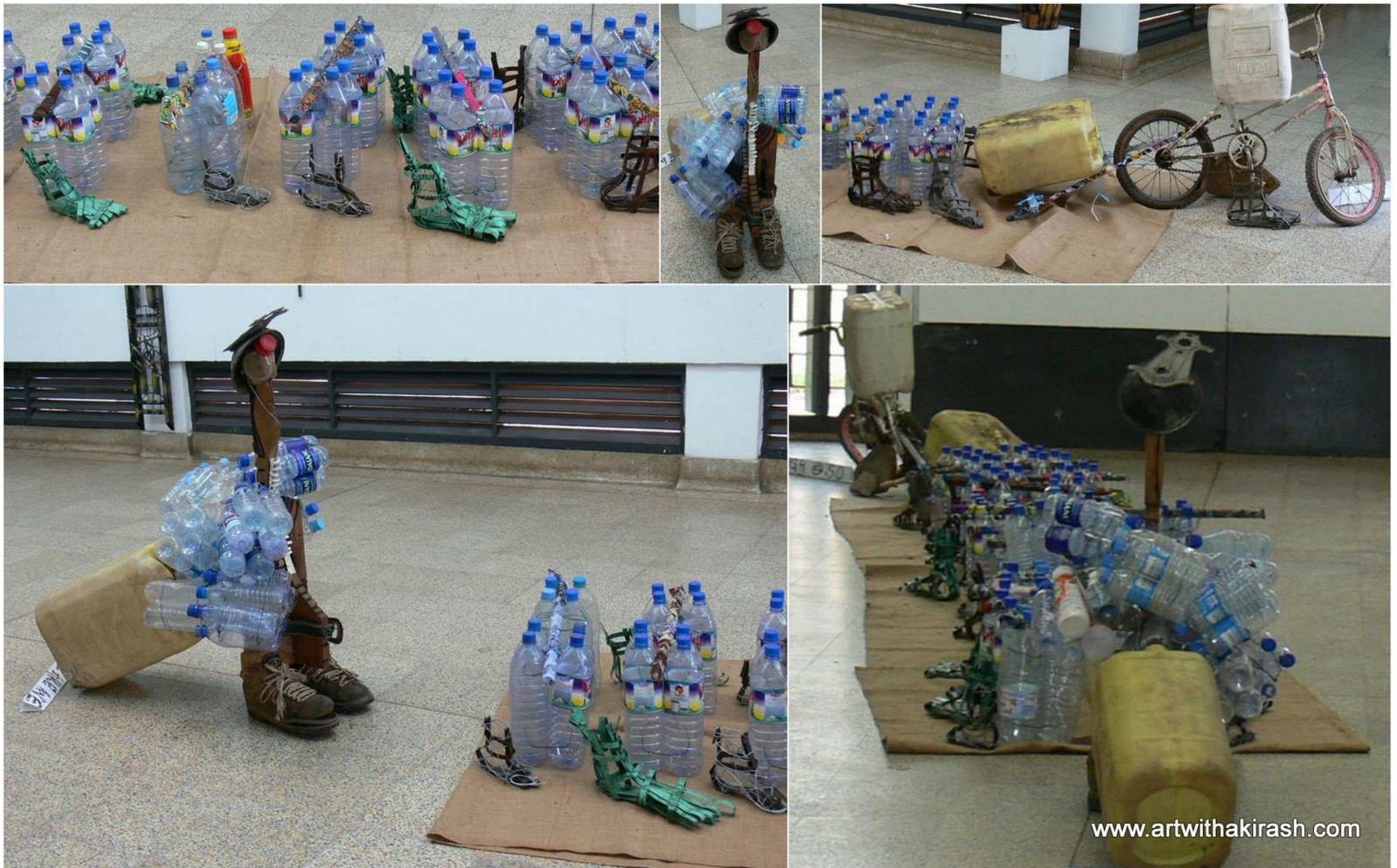
**DIPLDMAT, MIXEDMEDIA
SCULPTURE, 40X35X30", 2006**



COMMUNICATOR, MIXED MEDIA
SCULPTURE 72X36X45", 2006



**GHANA @ 50 YEARS. MIXED MEDIA
SCULPTURE / INSTALLATION. 20X15X10SQ FT.
2007**



**KOFUOR GALLON, MIXEDMEDIA
SCULPTURE INSTALLATION, 30X10X15 SQ
FT, 2007**

EBI ONI KE (FAMILIES OF PLASTICS) 2004-2012



**LOTS OF SPOONS/FORKS BUT
NO FOOD, MIXED MEDIA
PAINTING, 40X30X1", 2006**



BACK TO SCHOOL,
MIXEDMEDIA
SCULPTURE
INSTALLATION,
40 X40 10 SQ FT
2008





LOTS OF SPOON BUT NO FOOD, MIXED
MEDIA PAINTING, 40X30X15 FT, 2010



SUMMER TRIP 2008, MIXEDMEDIA
SCULPTURE, 36X 72X 60", 2008

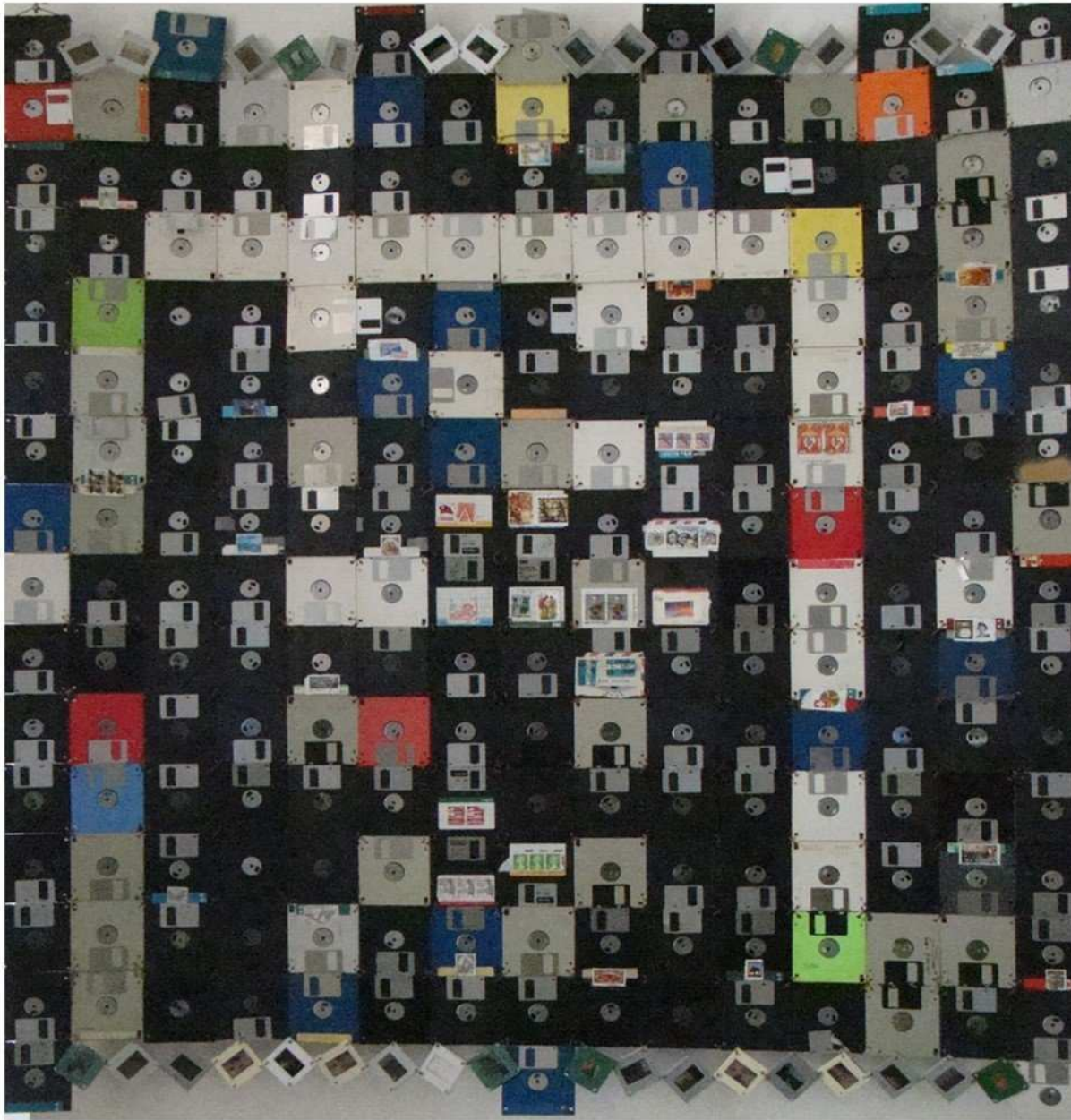


LIFE AFTER
DEATH,
MIXEDMEDIA
SCULPTURE ,
50X20X20",
2009

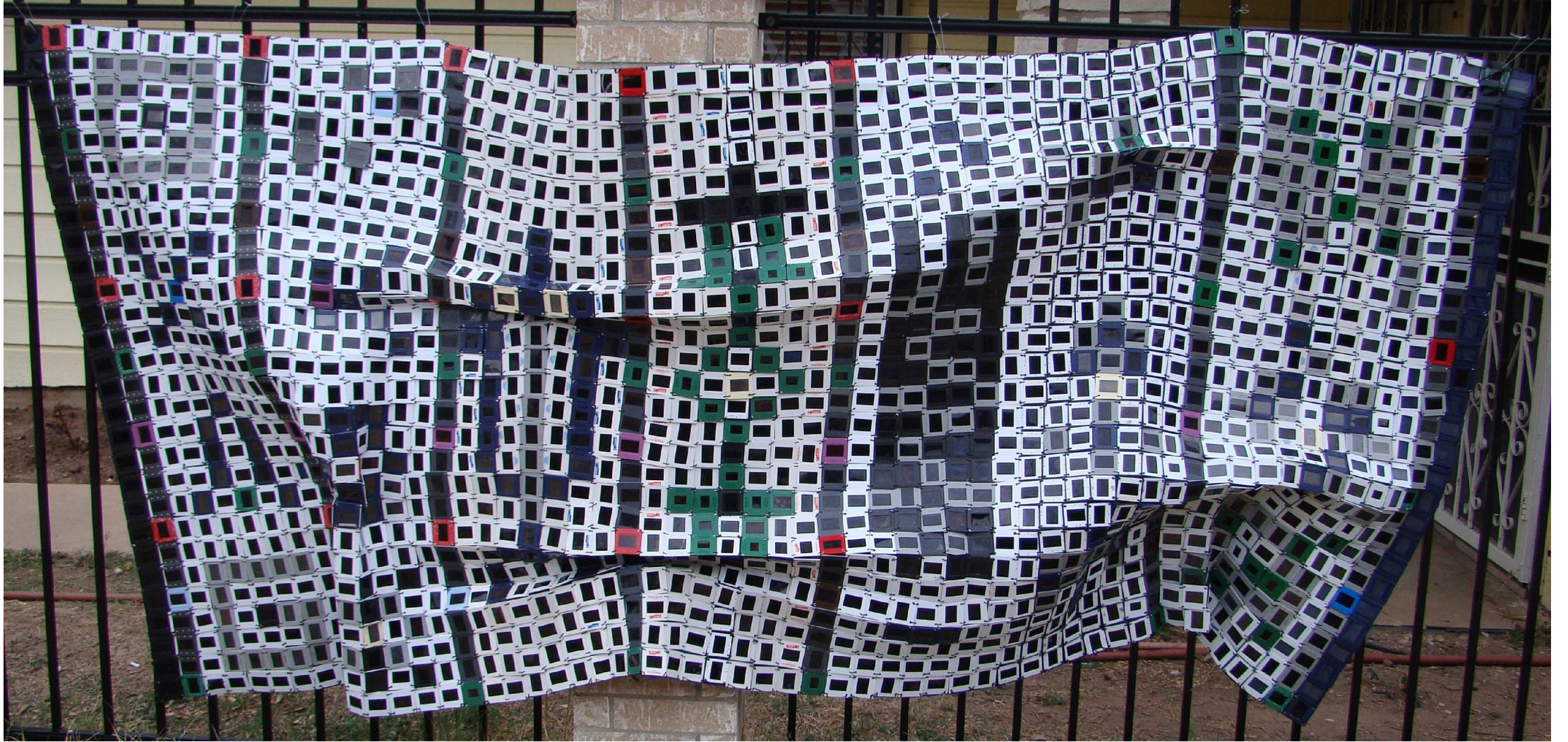
www.artwithkirash.com



**FRYING PAN TO FIRE, MIXEDMEDIA
SCULPTURE INSTALLATION, 40X30X15 FT, 2010**



MEMORIES, DISKET & COPPER WIRE, 72X72" 2009



AŞIKO / MOMENTS, SLIDE
CHROME&COPPER WIRE, 144X68" 2009

EBI ONI KE (FAMILIES OF PLASTICS) 2004-2012



GLOBAL WARMING (FINAL INSTALLATION WITH LIGHT), 55X38X38, 2009



GLOBAL WARMING (DETAIL)



GLOBAL WARMING (WITHOUT LIGHT)

EBI ONI KE (FAMILIES OF PLASTICS) 2004-2012



**NETWORKING,
MIXED MEDIA
SCULPTURE
INSTALLATION,
60X10 10 FT,
2010**





ACCRA @ NIGHT '2'
MIXED MEDIA SCULPTURE .
40X 65X 3",
2009



www.artwithakirash.com

**ILE LE/ REFUSE DUMP SITE (collaboration with Victoria U,
MIXEDMEDIA SCULPTURE INSTALLATION, 20X20X30 FT,
2010**



SUSTAINABLE DEVELOPMENTS, MIXED
MEDIA PAINTING, 45X60X2", 2010



**ABAWON*2,
MIXED MEDIA SCULPTURE INSTALLATION + PERFORMANCE,
PUBLIC SPACE,
2012**

EBI ONI KE (FAMILIES OF PLASTICS) 2004-2012



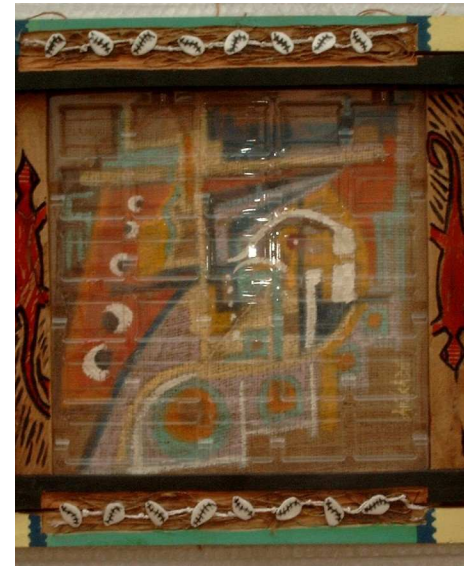
FAMILY SERIES "1" A



B



C



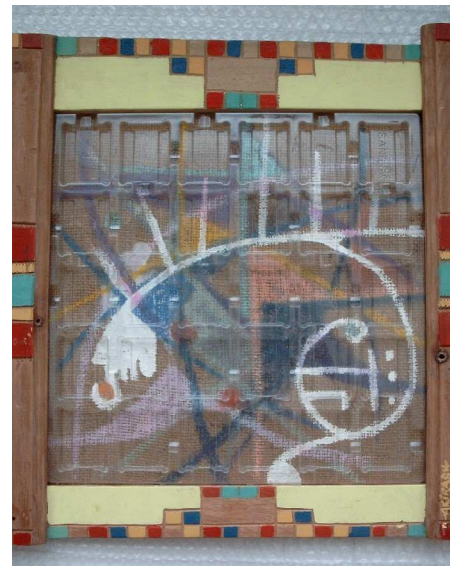
D



E



F



G



RUSTING. MIXED MEDIA. 20X28", 2007

EBI ONI KE (FAMILIES OF PLASTICS) 2004-2012

**Hope "3",
MILK CRATES, BABY
CHAIRS, GALVANISER
WIRE,
658X120X120",
2012**



**MIGRATION,
MIXED MEDIA
SCULPTURE,
45X25X25",
2012**



EBI ONI KE (FAMILIES OF PLASTICS) 2004-2012



**TRANSPARENCY,
MIXEDMEDIA
SCULPTURE
INSTALLATION,
240X120X24",
2012**



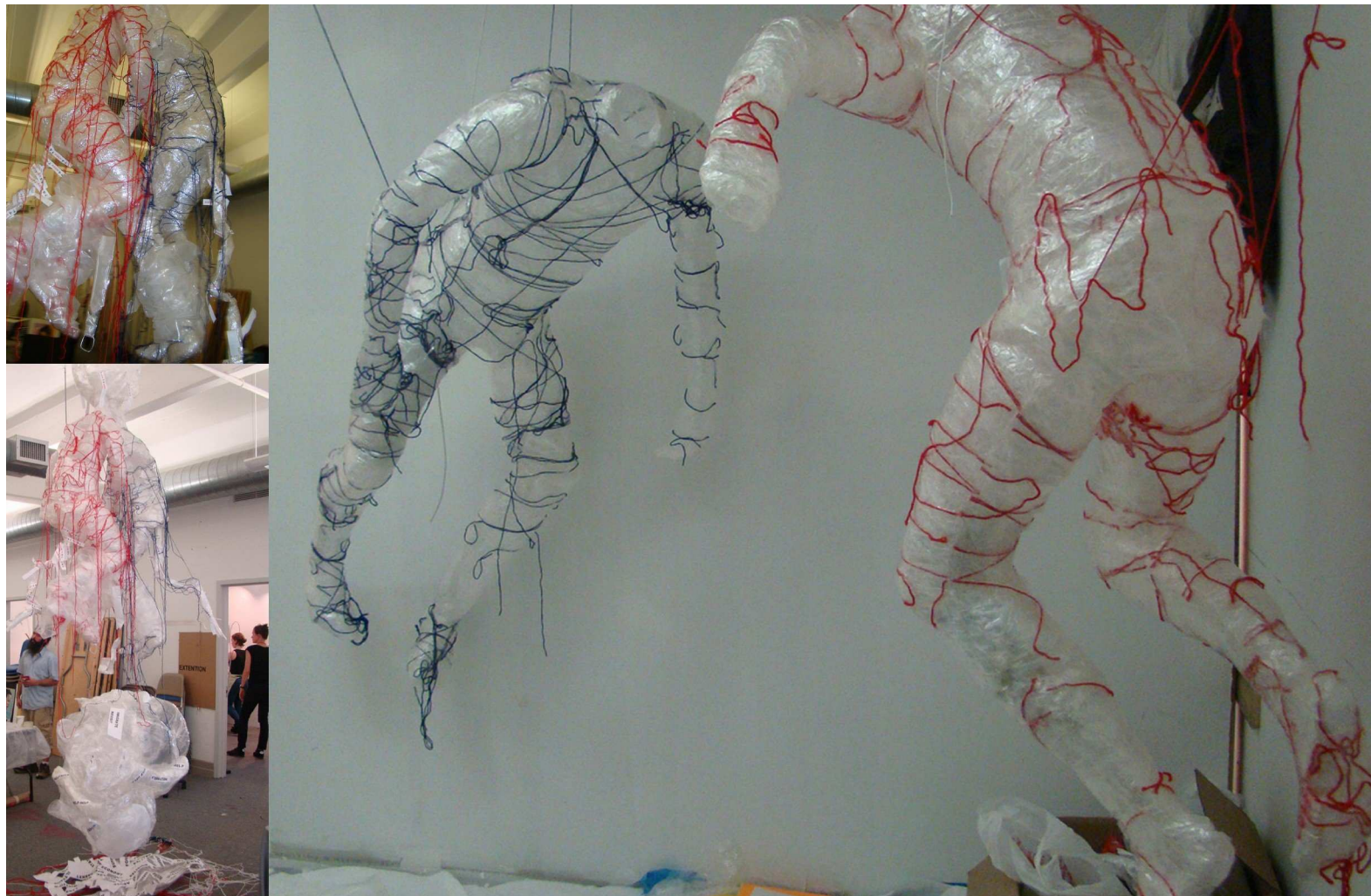
**HOPE" 2",
MIXEDMEDIA
SCULPTURE
INSTALLATION
,
35X72X24",
2012**

EBI ONI KE (FAMILIES OF PLASTICS) 2004-2012

**IMOLE "2" / BRIGHTNESS "2",
MIXED MEDIA SCULPTURE
INSTALLATION,
120X60X60",
2012**



**ENI BALAYA (WHO IS BOLD)
MIXED MEDIA SCULPTURE
INSTALLATION,
25X25X10 SQ FT,
2012**





**HARAKA HARAKA HAINA BARAKA.
MIXEDMEDIA SCULPTURE INSTALLATION.
45X45X15 SQ FT.
2012**

EBI ONI KE (FAMILIES OF PLASTICS) 2004-2012

**HANG UNBLALACE,
MIXEDMEDIA SCULPTURE
INSTALLATION,
150X60X36",
2012**



**ARTISTS IN RESIDENCY
(AIR),
MIXEDMEDIA SCULPTURE
INSTALLATION,
35X35X15 SQ FT,
2012**





SAJE NWA
(HOW IS MARKET DOING)



OLD PLASTICS SPOONS, FORKS, KNIFES, PLASTES,
CANVAS, GLUE, THREADS, PLASTIC NET., BURLAP,
ACRYLIC PAINTS. 60 X 360 X 3"



ARTIST ACKNOWLEDGEMENTS

Praise to Allah for giving me the knowledge, wisdom, and strenght for all this projects. i would like to thanks my families, friends, collectors, artists, Alliance Franscaise Accra, Goethe institut Accra, Ghana National museum Accra, FCA Ghana, Sansa Kumasi Ghana, Nirox projects Johannesburg, 12 decade Hotel Johannesburg, Commonwealth Foundation uk, Pollock K. Foundation, Triangle Art Association NY, Nafasi ArT Space Tanzania, Big Factory/ Thupelo Johannesburg, Vytlacil campus of the Artstudents League NY, Rhoda Woets, Attah Kwami, Mrs. Sylla Eleanore, Late Prof. Joe K. Nkrumah, Katharina Dittschar, Mr. GWK Dawson, Musah Swalah, John Owo, my Brother Kazeem Akindiya. my lovely partner Michelle Oreoluna Akindiya, my preciuos gift Titilola Mariam Efua Ajumo Fadeke Destiny Akindiya and to all ARTWITHAKIARSH FOUNDATION all over the world. ESE MODUPE PUPO, OPE MIKOTAN, AJOSE WA KONI BAJE000. IWAJU IWAJU NIGBOGBO WA YIO MALO 00. IRE 000.