



Oju inu (Insight) : Olaniyi Rasheed Akindiya AKIRASH

Acknowledgements

YINNI YINNI KENI OSE MI

All praises to the most high in heaven, my wife Michelle Oreoluwa Akindiya, most precious gifts ever Mariam Fadekemilola Akindiya (MFA) & Okikiola Hajia Zaheen Akindiya (OHA), and to all my extended families at home and abroad. Thanks go to Co-Lab Project Austin, Centraltrak UTDallas Artists In Residency, RO2 Art Gallery Dallas, Museum of Human Achievements Austin, George Washington Carver Museum Austin, Mass Gallery Austin, JMAC in Namibia, National Art Gallery Namibia, AC institute NY, and The McKinney Avenue Contemporary Dallas for showing these series of works in your venues. To Mr Isiaka Ishola Akindiya & Mrs. Fadekemilola Akindiya, Mary & Micheal Perry, Andy Wilson & Emily Perry, and to all of you out there who have contributed, supported, assisted in any way to guide these projects, ideas, and techniques on a successful journey, I can not mention you all. I SAY ESE PUPO, AJOSE WA KONI BAJE OOO, OKE OKE LE O MALO OO. THANK YOU SO MUCH.

Am still ENIYAN LASO MI : THE AKIRASH

www.artwithakirash.com

Artist, Editor

Olaniyi Rasheed Akindiya AKIRASH

Co-editor

Michelle Oreoluwa Akindiya

Front cover image

ATINUKE / Children are to be Pampered, Mixed Media Tapestry Painting, 105 X 85 Inches, 2014

Copyright (c) 2015. The Artwithakirash Foundation.

All rights reserved. No part of this publication may be reproduced in any way without written permission from Artwithakirash.

Dedication

Late Madam Tamurat Adunni Akindiya (RIP)



ARTIST STATEMENTS

My works focus on moments. Time, present in seconds and minutes, can only be preserved through documentation, as memory is fleeting and easily forgotten or transformed. My work is often marked by an exploration of rural versus urban life, namely the accelerated pace of development and social infrastructure. I produce works which explore the personal and the universal, which investigate the invisible systems of power that govern everyday existence, and which instigate debate among viewers without conventional ink on paper. My works address social issues.

I wonder from where the experience, knowledge, and wisdom of the spider comes as it weaves its fascinating web, or that of a bird constructing its nest. I think the work of these creatures served as inspiration to our fathers and mothers in the invention of the cloth we wear today. Spinning, twisting, and weaving cotton together. Dying some into colors extracted from leaves, roots and bark, sands and stones, animal dung and clay. Where and from whom did the idea of the loom come from? As time grows we forget how this was done in the past; how it was fascinating manual work, without all the machines of the 21st century now found in textile companies. In this project I am looking at the people, techniques, experiences, and dynamics of using looms to design, create, and weave traditional cloths, including ASO OKE, the cloth from Southwest Nigeria by the people of Yoruba land, and also the world celebrated royal KENTE cloth of the Asante kingdom in Kumasi, Ghana. I hope to honor the many countries in the world that have their own traditional cloth locally made from spinning cotton, like Mexico, India, China, and Japan to mention few,

I used various colored papers cut into small human figures, intricately joined and interwoven. I combine them together as one to form a complete piece, like a cloth. Sometimes I join them to form letters, words or symbols. I fold, twist and join strips of them to form a tapestry.

Like a mixed media painting, I install them on the wall, flowing from the ceiling to the floor of the gallery. The woven pieces connect to a traditional loom weaver at the center, who produces the strips that will be joined by the fabricating machines to form the complete tapestry paintings that hang on the wall, exploring the secrets of the creation of these great traditional cloths - how they are prepared from spinning cotton into threads and then put together to form these unique clothes.

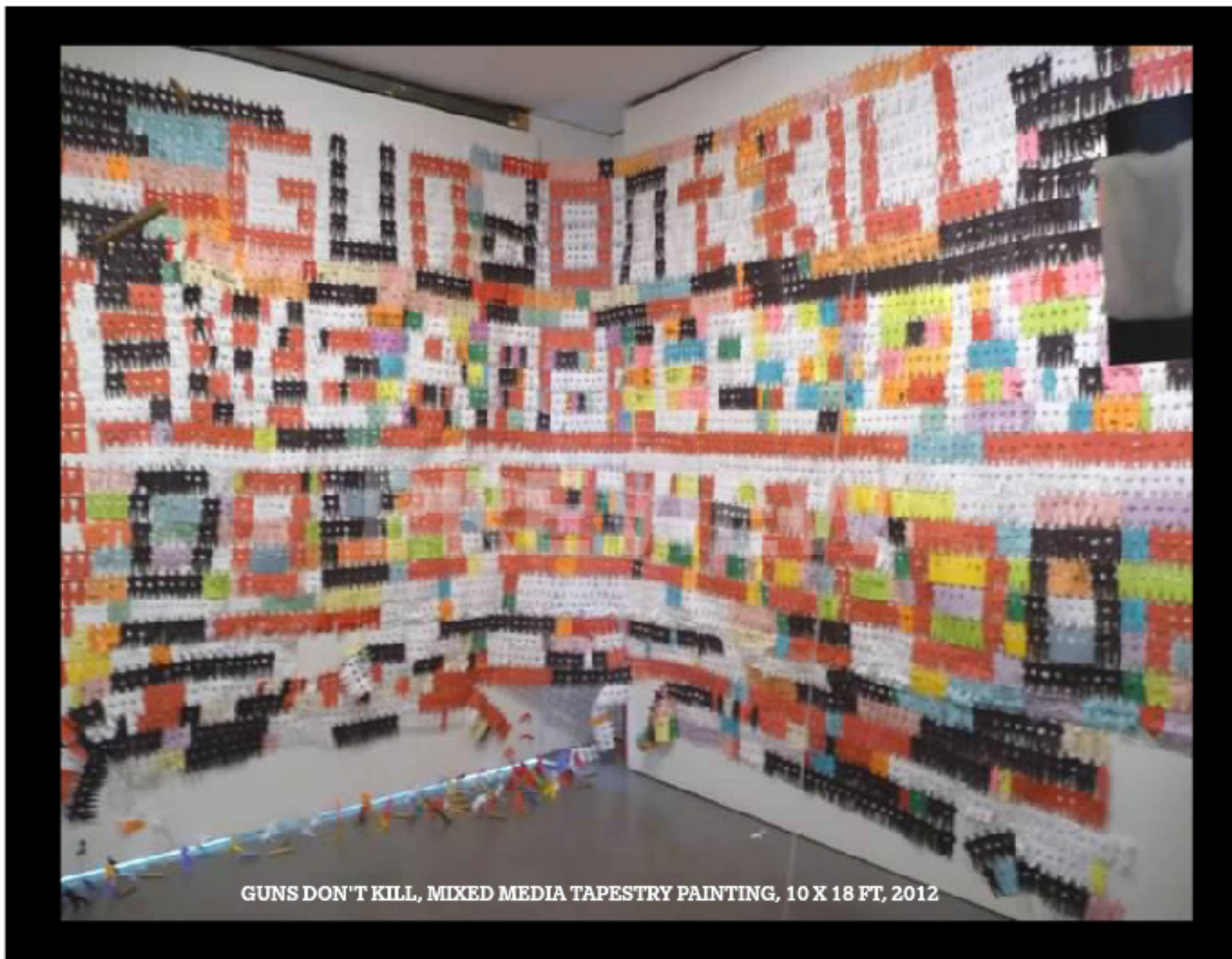
I work with a multitude of techniques and materials. The result of which may be mixed media painting, sculpture, installation, video, photography, sound, or performance. Found objects that relate to a particular society or community are central in my work. They may be woven, sewn, glued, welded, nailed, collaged, cast, or carved. They may be mounted on canvas as 2D mixed media painting, or used as sculptural 3D work. My works invoke touch and tempt viewers to forget how to move their feet. I am always trying new things, experimenting, and challenging myself with new techniques, ideas and materials to interact with people.

I have dedicated my life as an interdisciplinary artist to easing pain and providing comfort, peace, and solace. I believe art can be a balm to the soul, revealing an often quiet inner truth. My art is about the joys in life and is directly inspired by rhythm, harmony, and repetition of movements.





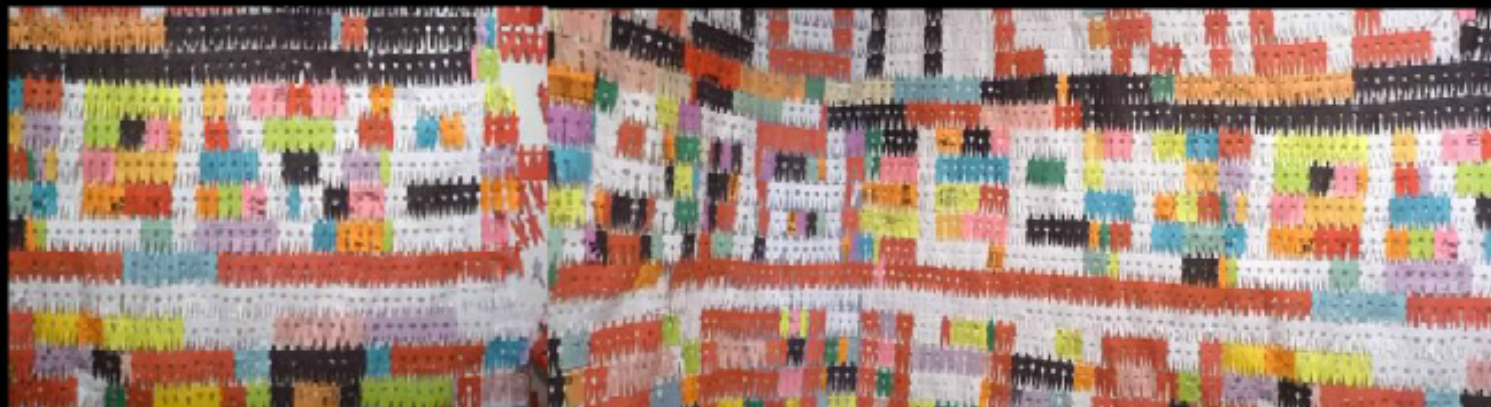
WORK IN PROGRESS



GUNS DON'T KILL, MIXED MEDIA TAPESTRY PAINTING, 10 X 18 FT, 2012



**GUNS DON'T KILL,
MIXED MEDIA TAPESTRY PAINTING/
SCULPTURE,
10 X 18 FT,
2012**





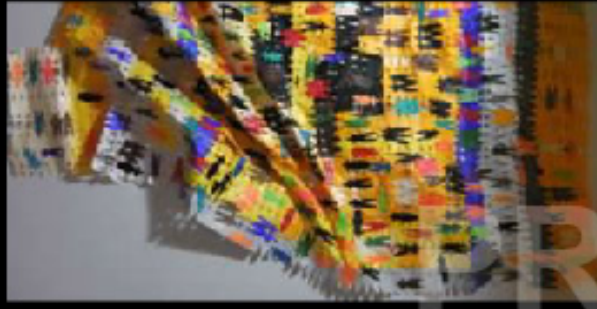
GUNS DON'T KILL, MIXED MEDIA TAPESTRY PAINTING, 10 X 18 FT, 2013.



AMO LEWA / BEAUTY IS WITHIN, MIXED MEDIA TAPESTRY PAINTING, 12 X 18 FT, 2013



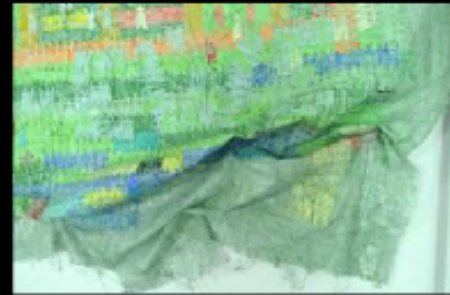
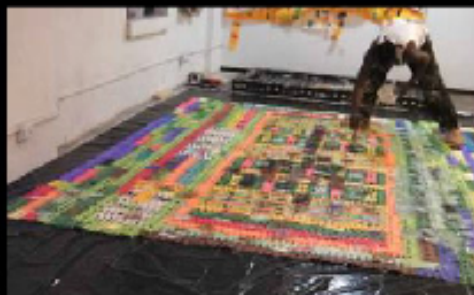
AMO LEWA / BEAUTY IS WITHIN, MIXED MEDIA TAPESTRY PAINTING, 12 X 18 FT, 2013



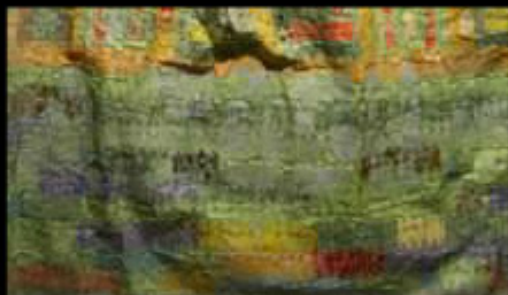
OGIRI L'ETI / WALLS DO HAS EARS, MIXED MEDIA TAPESTRY PAINTING, 12 X 18 FT, 2013



OGIRI L'ETI / WALLS DO HAS EAR EARS, MIXED MEDIA TAPESTRY PAINTING, 12 X 18 FT, 2013



AJODUN EWE / CHILDREN'S HARVEST FESTIVAL, MIXED MEDIA TAPESTRY PAINTING, 20 X 12 FT, 2013



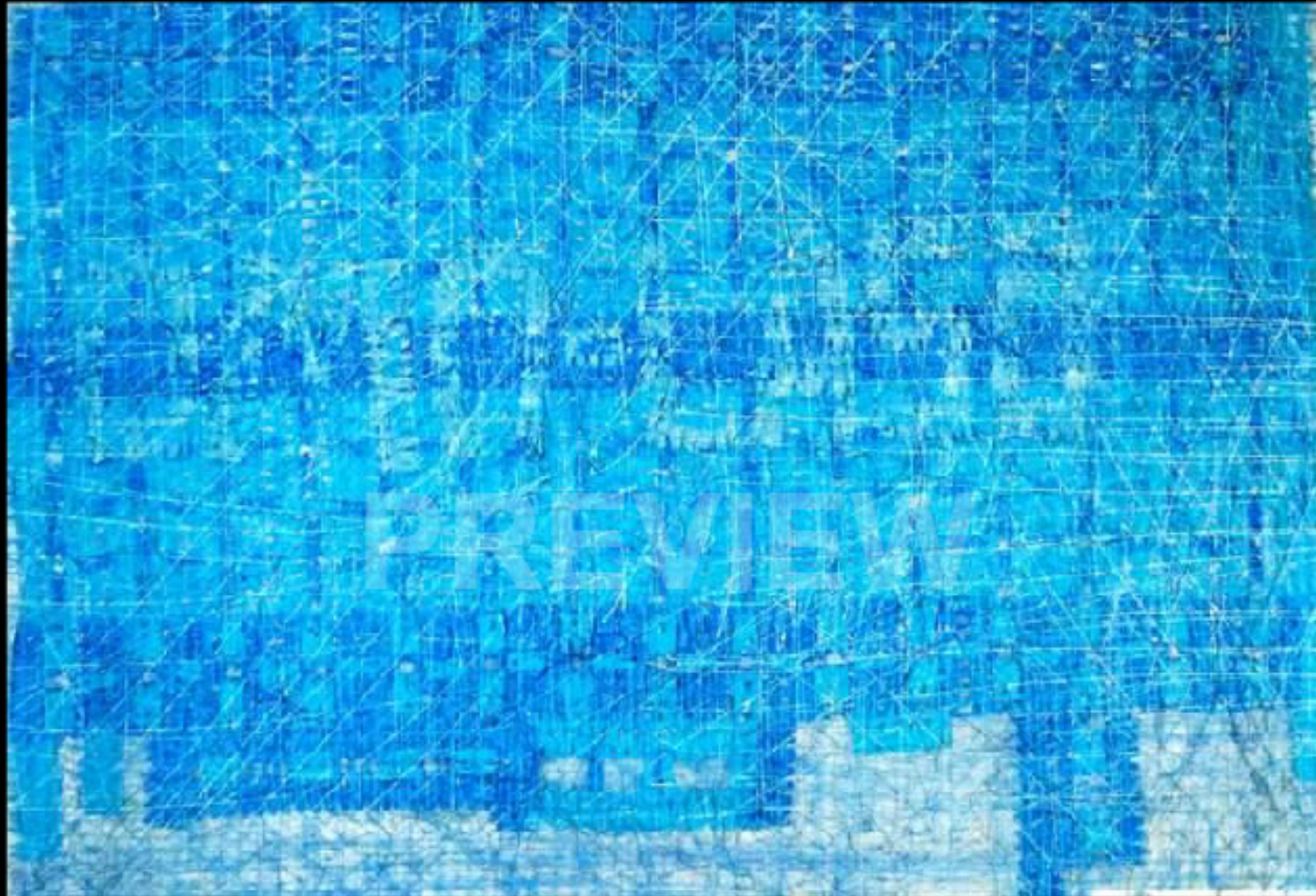
AJODUN EWE / CHILDREN'S HARVEST FESTIVAL, MIXED MEDIA TAPESTRY PAINTING, 20 X 12 FT, 2013



ASHIRI / SECRET, INSTALLATION WITH THE PAPER PEOPLE TAPESTRY PAINTINGS AT MUSEUM OF HUMAN ACHIEVEMENTS AUSTIN, 2014



OMO L'ASO / CHILD IS IMPORTANT, MIXED MEDIA TAPESTRY PAINTING, 7 X 12 FT, 2013



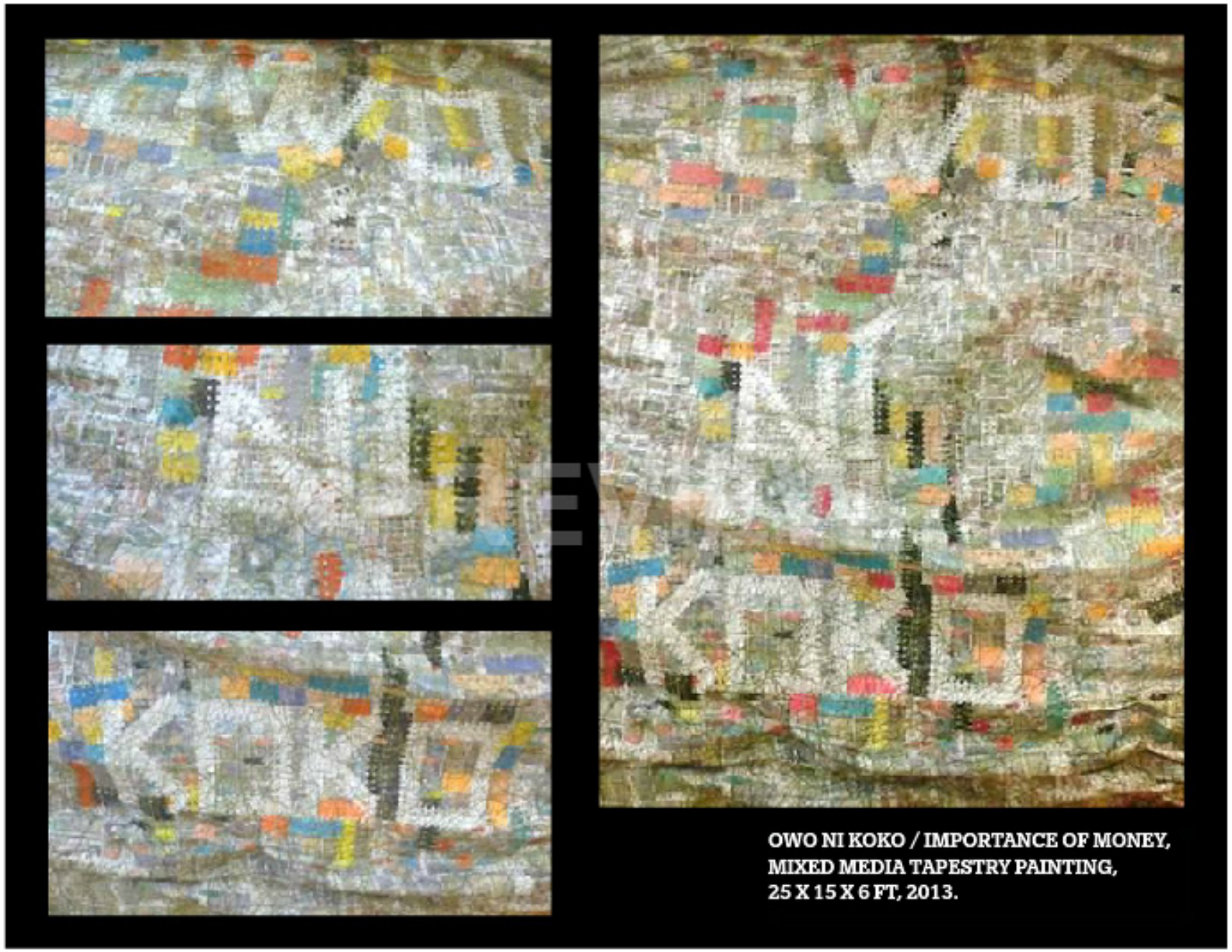
OMO L'ASO / CHILD IS IMPORTANT, MIXED MEDIA TAPESTRY PAINTING, 7 X 12 FT, 2013



MAKING OF OWO NI KOKO / IMPORTANCE OF MONEY, AT THE USHER FORT IN ACCRA-GHANA DURING THE CHALE WOTE FESTIVAL 2013



**OWO NI KOKO / IMPORTANCE OF MONEY,
MIXED MEDIA TAPESTRY PAINTING,
25 X 15 X 6 FT, 2013.
AT USHER FORT ACCRA - GHANA**



**OWO NI KOKO / IMPORTANCE OF MONEY,
MIXED MEDIA TAPESTRY PAINTING,
25 X 15 X 6 FT, 2013.**



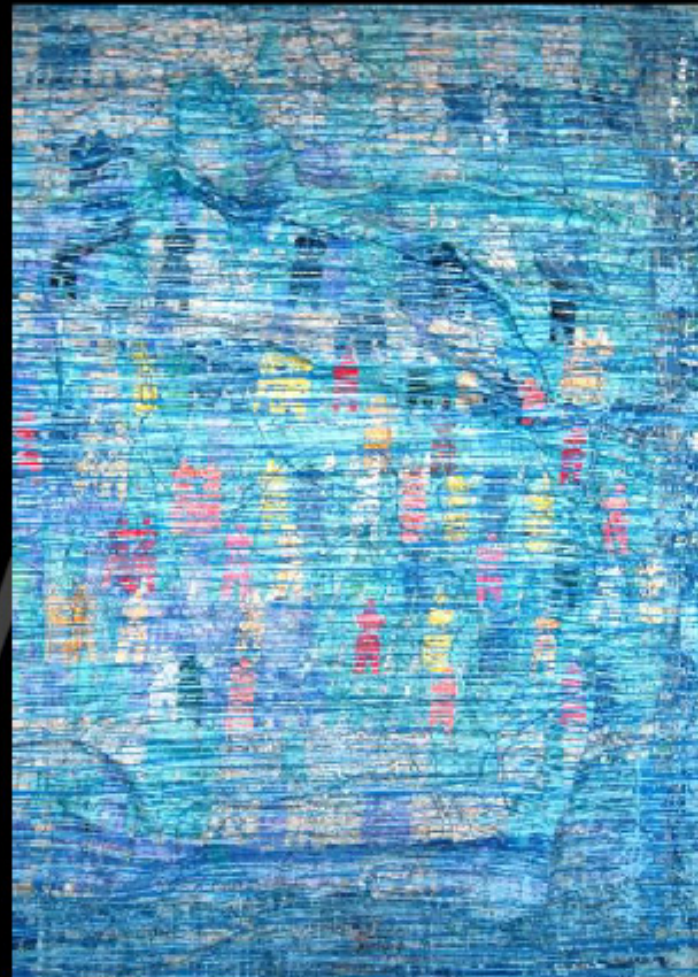
**OWO NI KOKO / IMPORTANCE OF MONEY,
MIXED MEDIA TAPESTRY PAINTING,
25 X 15 X 6 FT, 2013.
EXHIBITION AT GEORGE WASHINGTON CARVER MUSEUM AUSTIN**



OJU INU / INSIGHT, MIXED MEDIA TAPESTRY PAINTING, VARIES IN SIZE, 2014



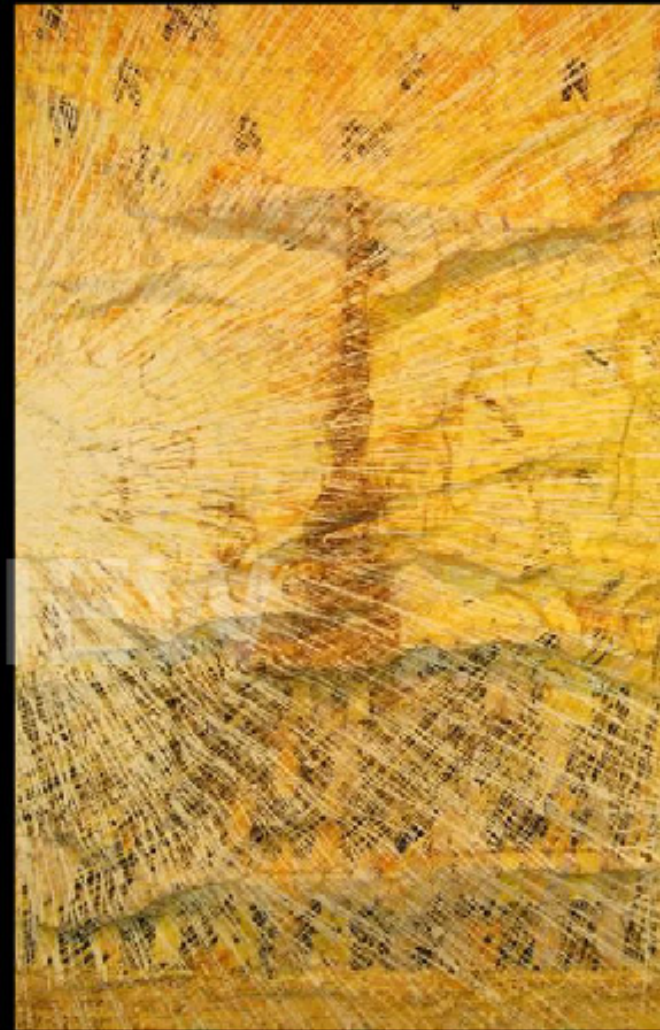
**AWAKEN,
MIXED MEDIA TAPESTRY PAINTING,
40 X 55 X 4 INCHES, 2013.**



**OWURO L'OJO / MORNING IS TIME,
MIXED MEDIA TAPESTRY PAINTING,
48 X 40 X 4 INCHES, 2013.**



**ALL WHO WANDER, MIXED MEDIA TAPESTRY PAINTING,
60 X 40 X 4 INCHES, 2013.**



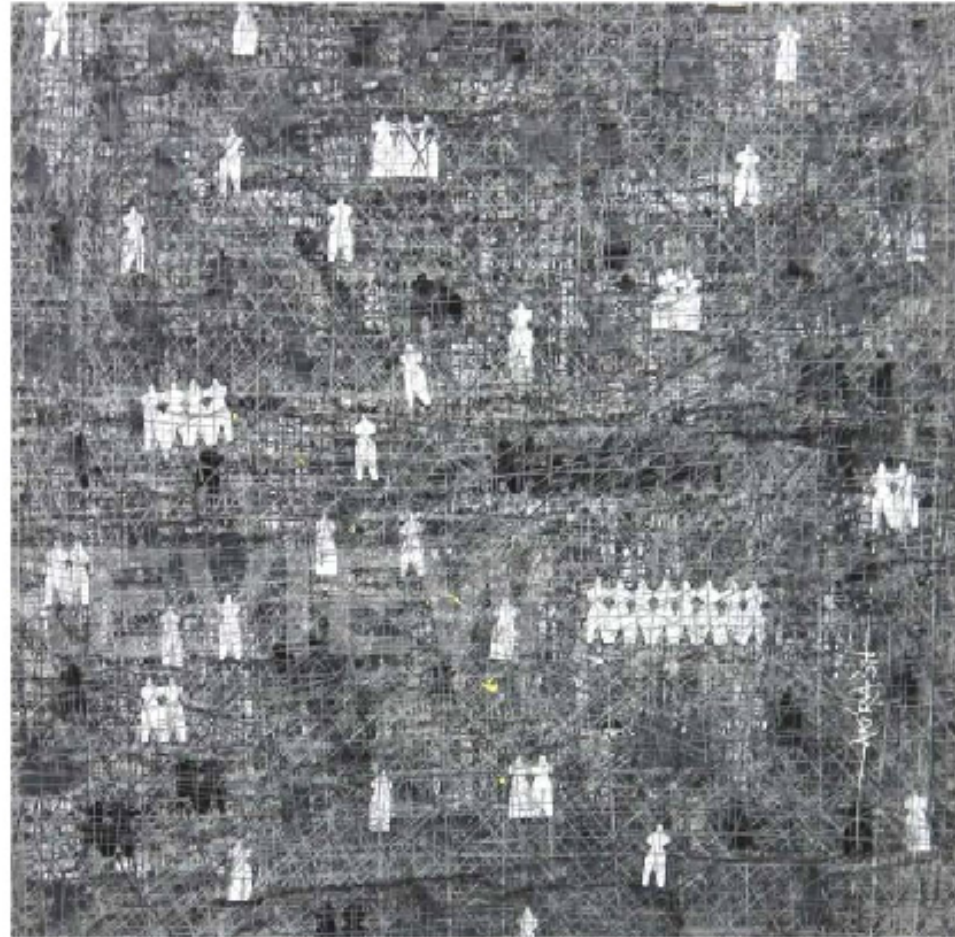
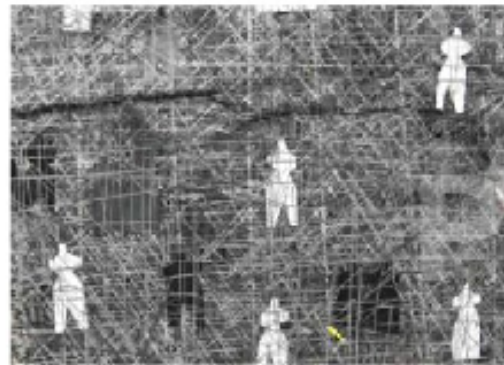
**ALL THAT GLITTERS,
MIXED MEDIA TAPESTRY PAINTING,
60 X 44 X 4 INCHES, 2013.**



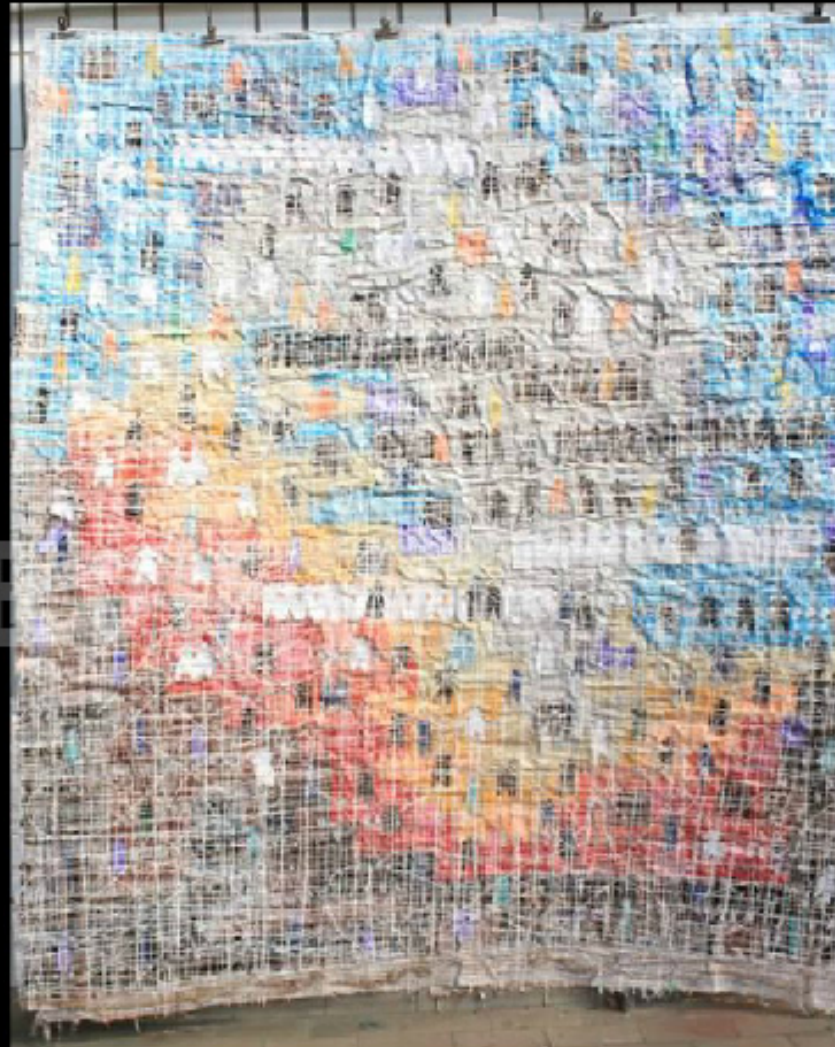
REMEDY FOR HUNGER, MIXED MEDIA TAPESTRY PAINTING, 80 X 40 X 5 INCHES, 2013.



OMBINDI, MIXED MEDIA TAPESTRY PAINTING, 80 X 40 X 5 INCHES, 2013.



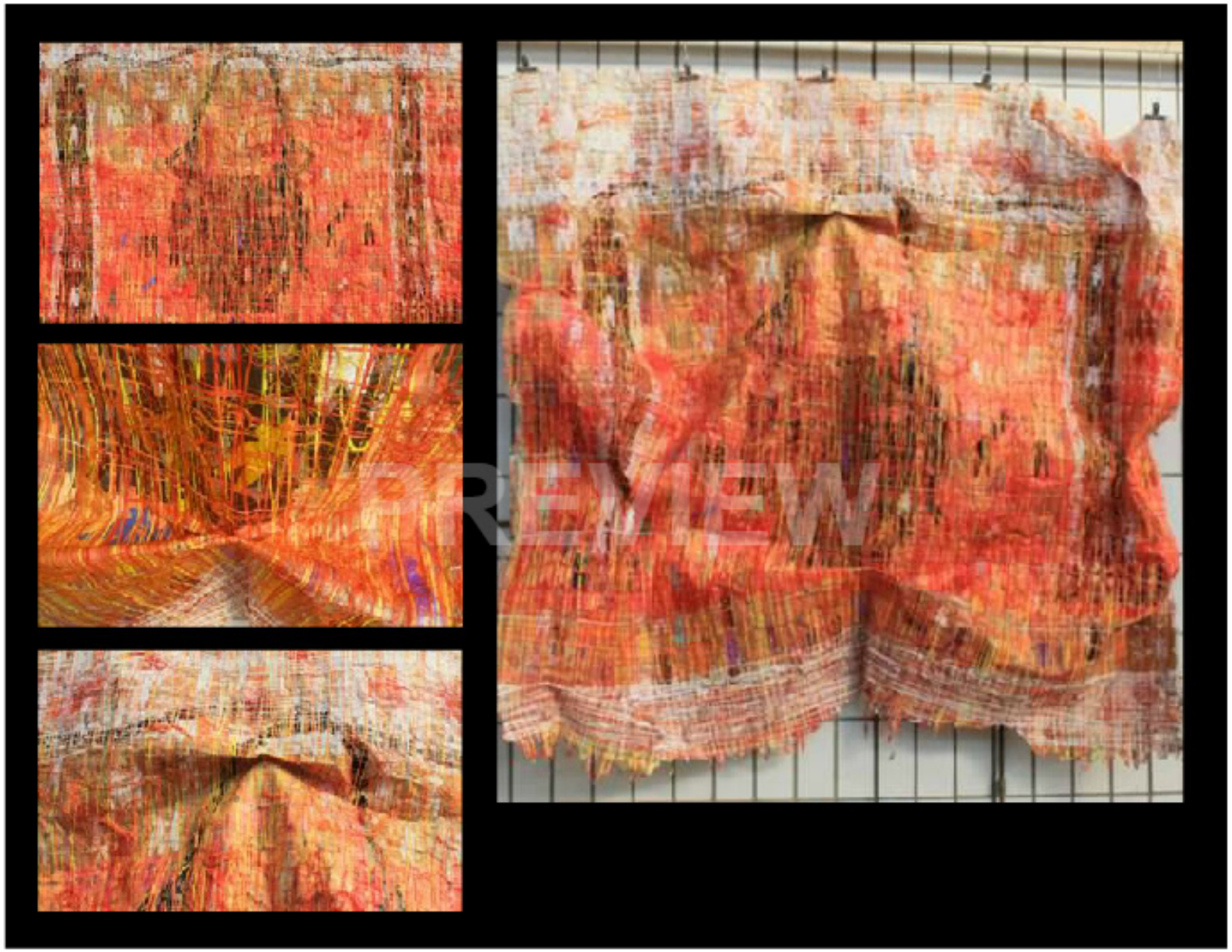
**JIGI / MIRROR,
MIXED MEDIA TAPESTRY PAINTING,
67 X 59 X 7 INCHES,
2013.**



**NIBO NILE / WHERE IS HOME "2",
MIXED MEDIA TAPESTRY PAINTING,
80 X 80 X 3 INCHES,
2013.**

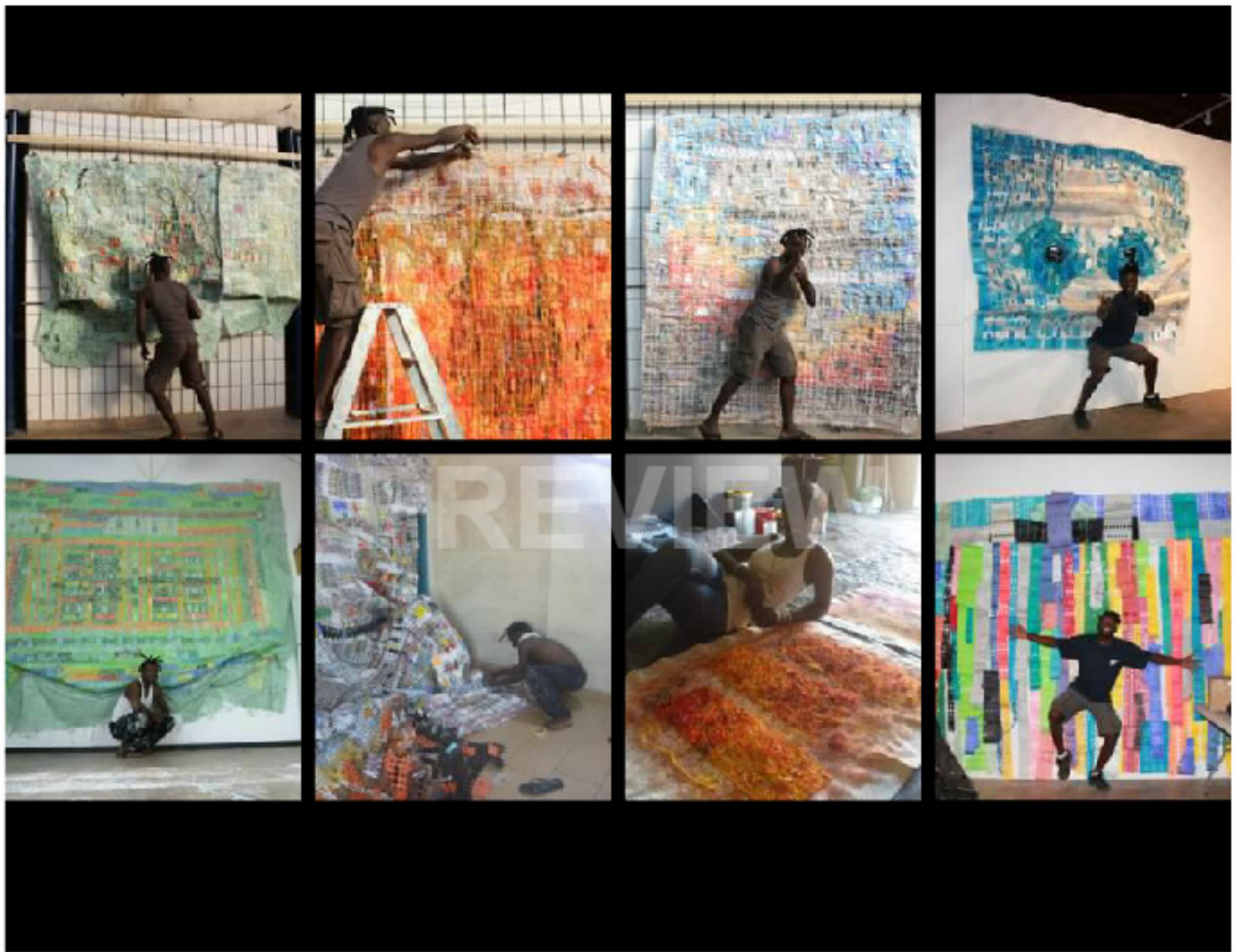


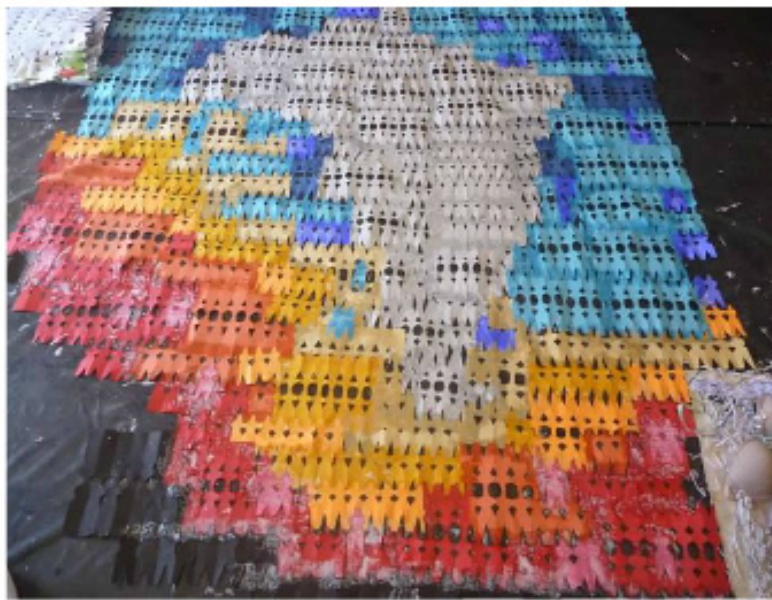
OUR ECONOMY, MIXED MEDIA TAPESTRY PAINTING, 120 X 120 X 5 INCHES, 2013.

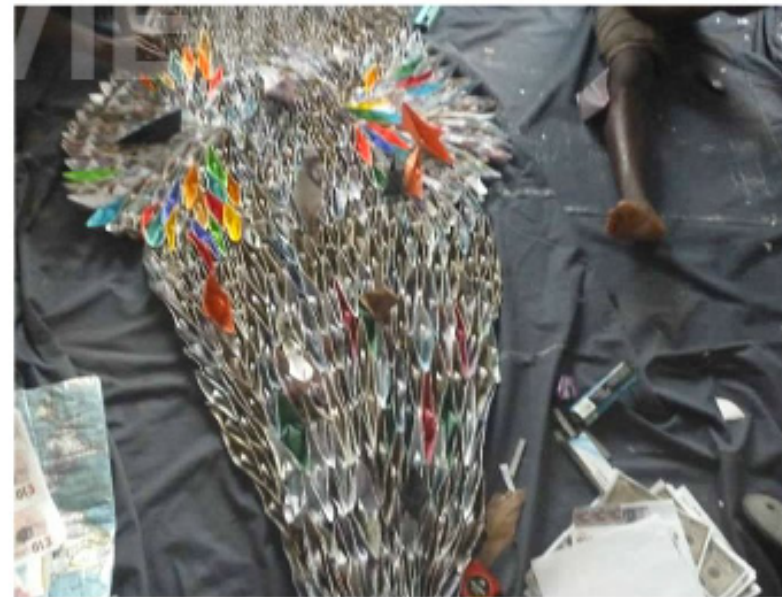




SOUL TIES, MIXED MEDIA TAPESTRY PAINTING, 80 X 40 X 5 INCHES, 2013.



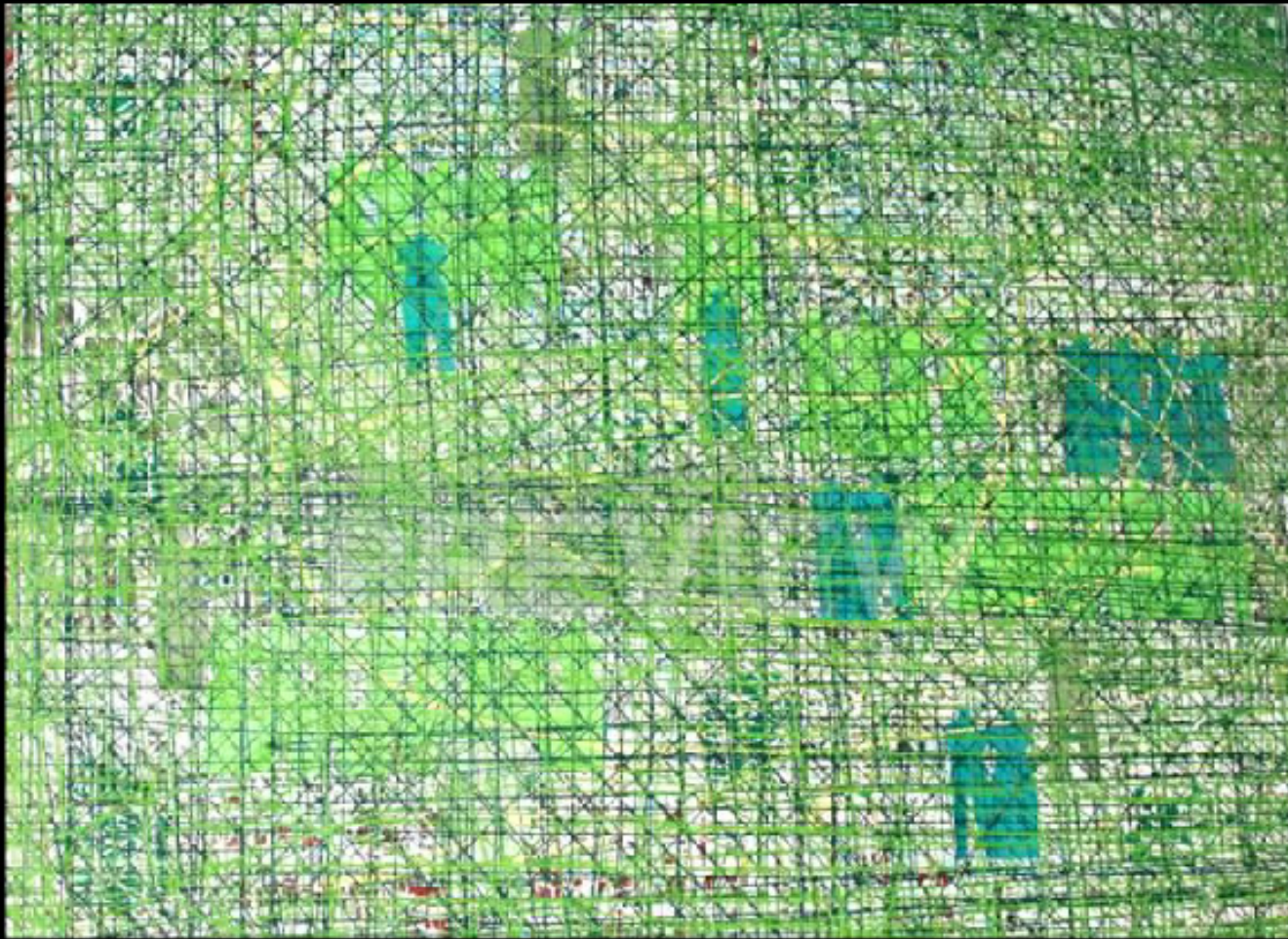




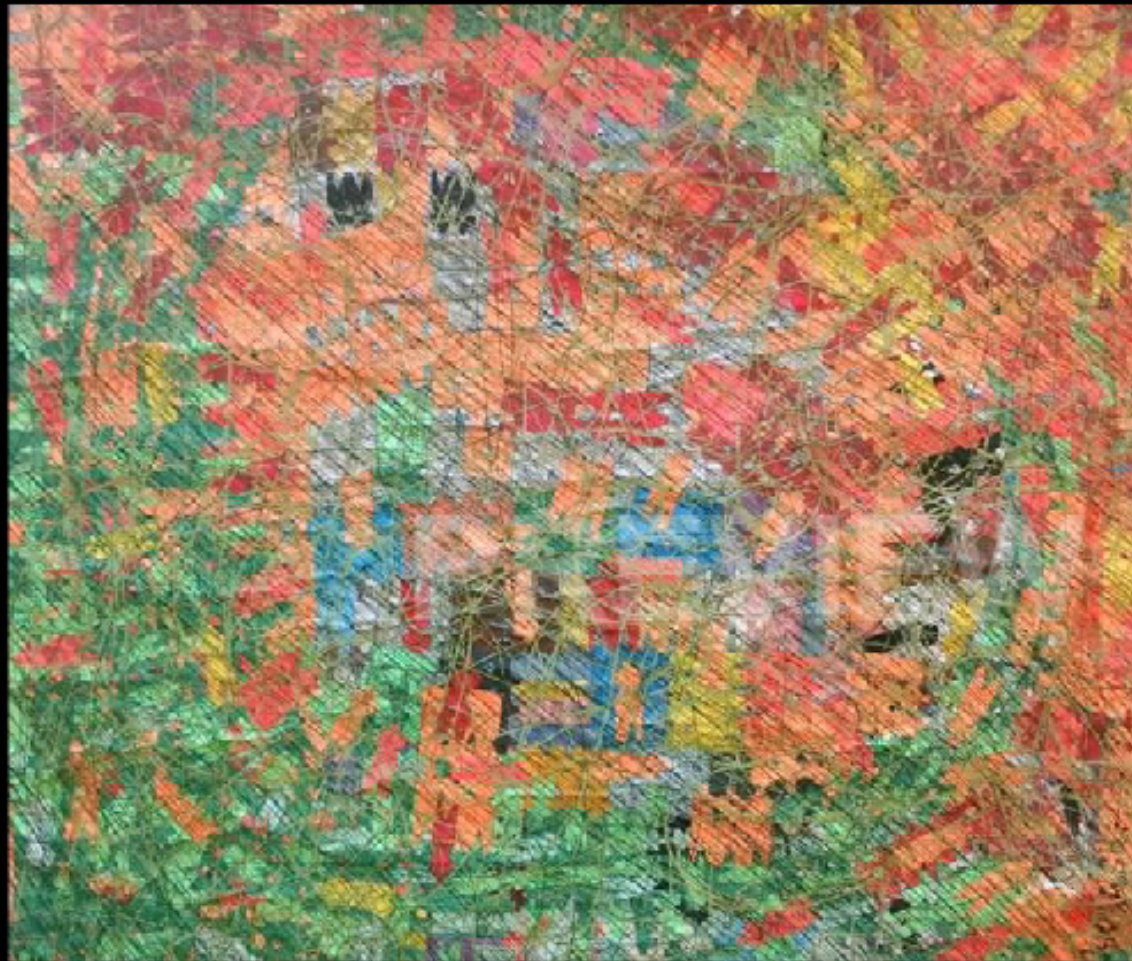


**SWEET SIXTEEN,
MIXED MEDIA TAPESTRY PAINTING,
75 X 40 X 2 INCHES,
2014.**





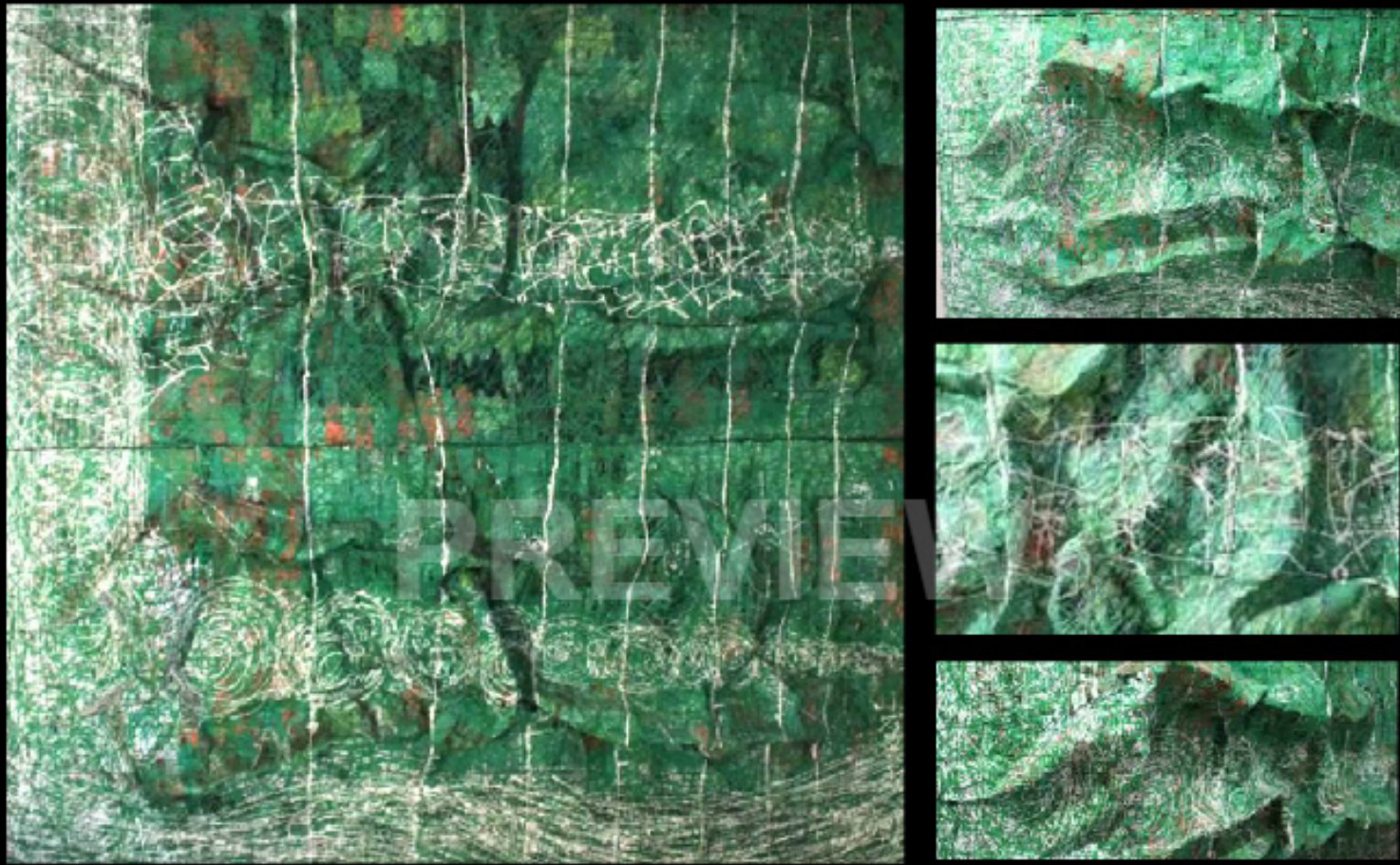
GREEN LIGHT, MIXED MEDIA PAINTING, 30 X 40 X 5 INCHES, 2013.



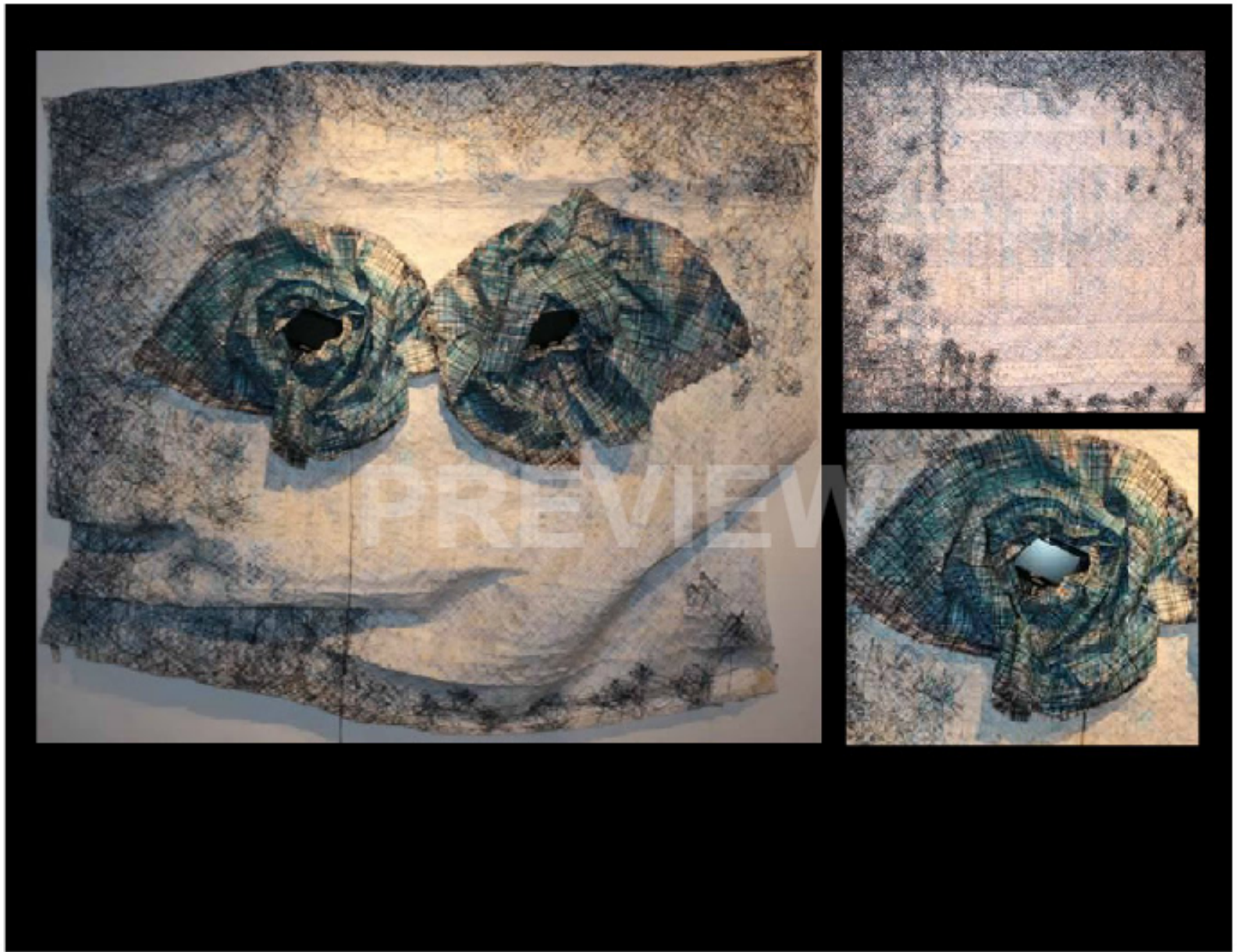
OGBE LE "1", MIXED MEDIA TAPESTRY PAINTING, 3 X 4 FT, 2014.



OGBE LE "2" , MIXED MEDIA TAPESTRY PAINTING, 3 X 4 FT, 2014.



FERTILE LAND, MIXED MEDIA TAPESTRY PAINTING, 80 X 80 X 8 INCHES, 2014.





IGBA ORUN / SUMMER TIME, MIXED MEDIA TAPESTRY PAINTING, 5 X 4 FT, 2014.



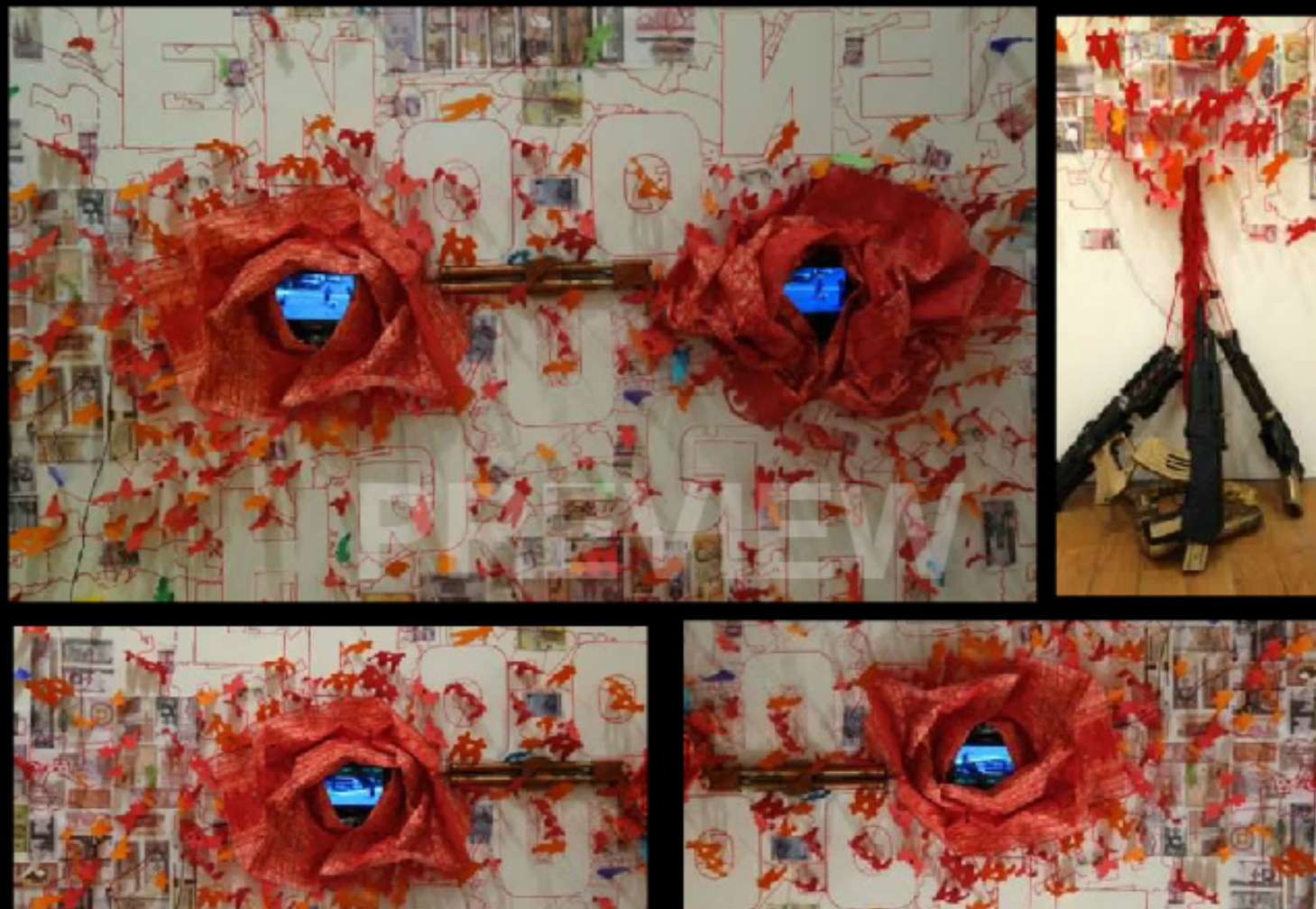
ASA SAWA / DIVERSITY , MIXED MEDIA TAPESTRY PAINTING, 10 X 15 FT, 2014.



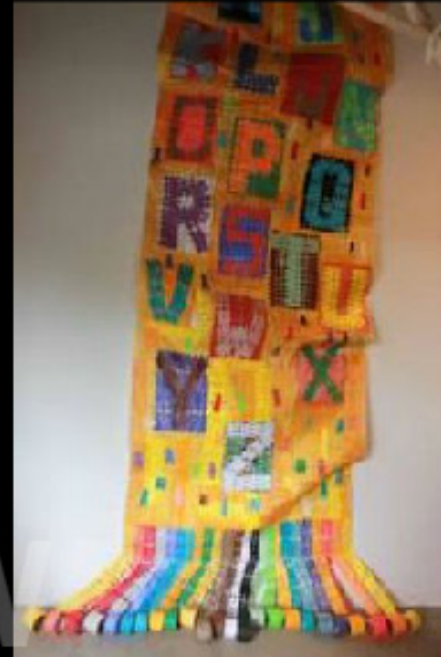
TILL DEATH DO US PART , MIXED MEDIA TAPESTRY PAINTING, 5 X 4 FT, 2014.



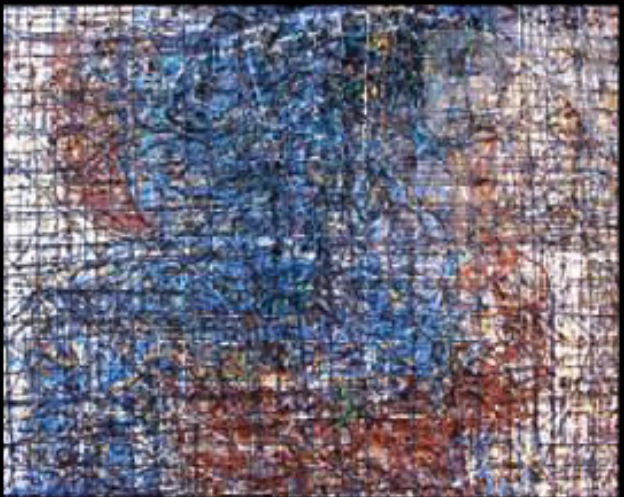
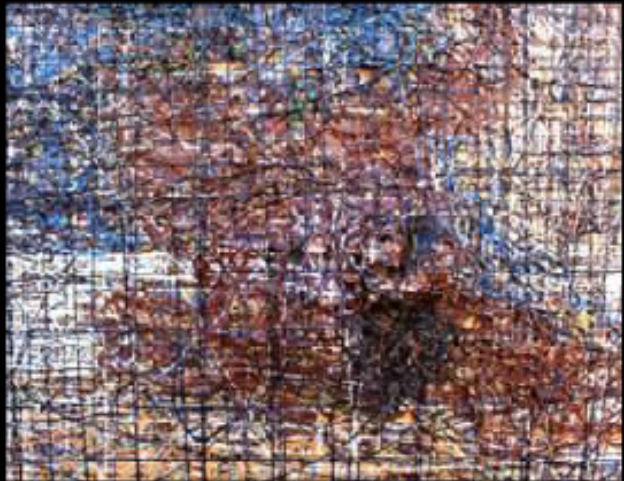
GBAJU GBAJA / CELEBRITY , MIXED MEDIA TAPESTRY SCULPTURE / PAINTING, 10 X 20 X 5 FT, 2014.



OTO GEE / ENOUGH IS ENOUGH, MIXED MEDIA TAPESTRY SCULPTURE / PAINTING, 10 X 15 FT, 2014.

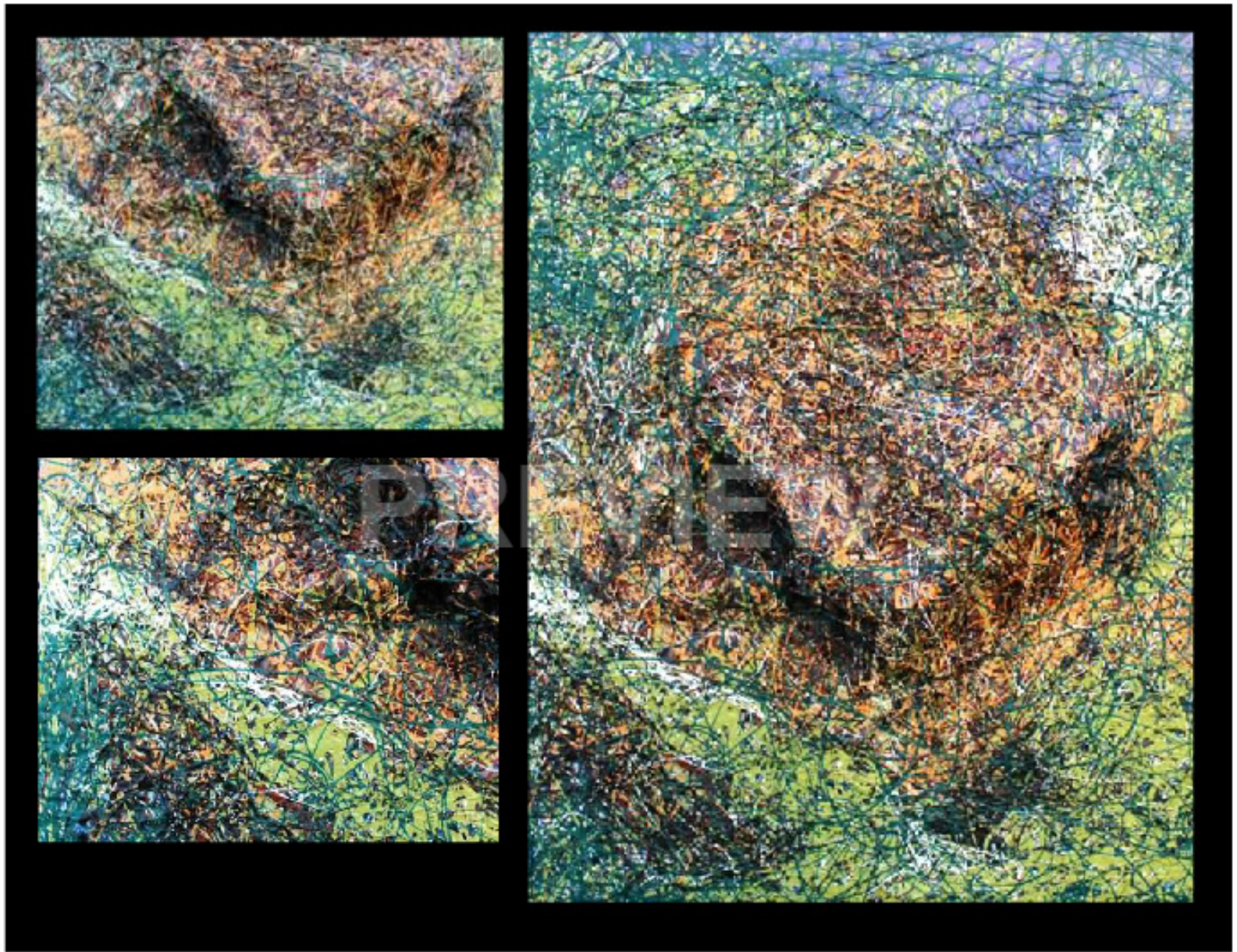


ORO / WORDS, MIXED MEDIA TAPESTRY PAINTING, 4 X 25 FT, 2014.



**KINDNESS, MIXED MEDIA TAPESTRY PAINTING,
19 X 19 X 5 INCHES, 2015**





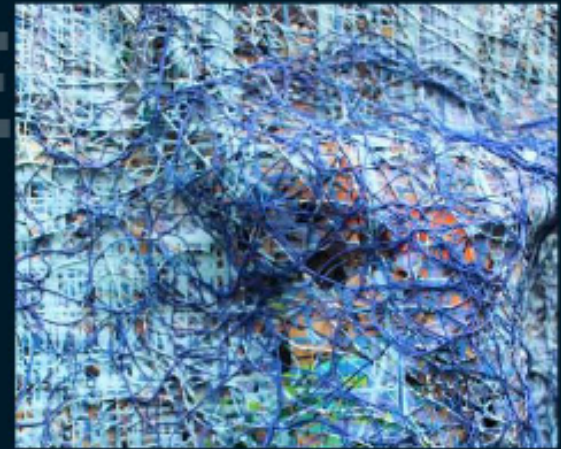
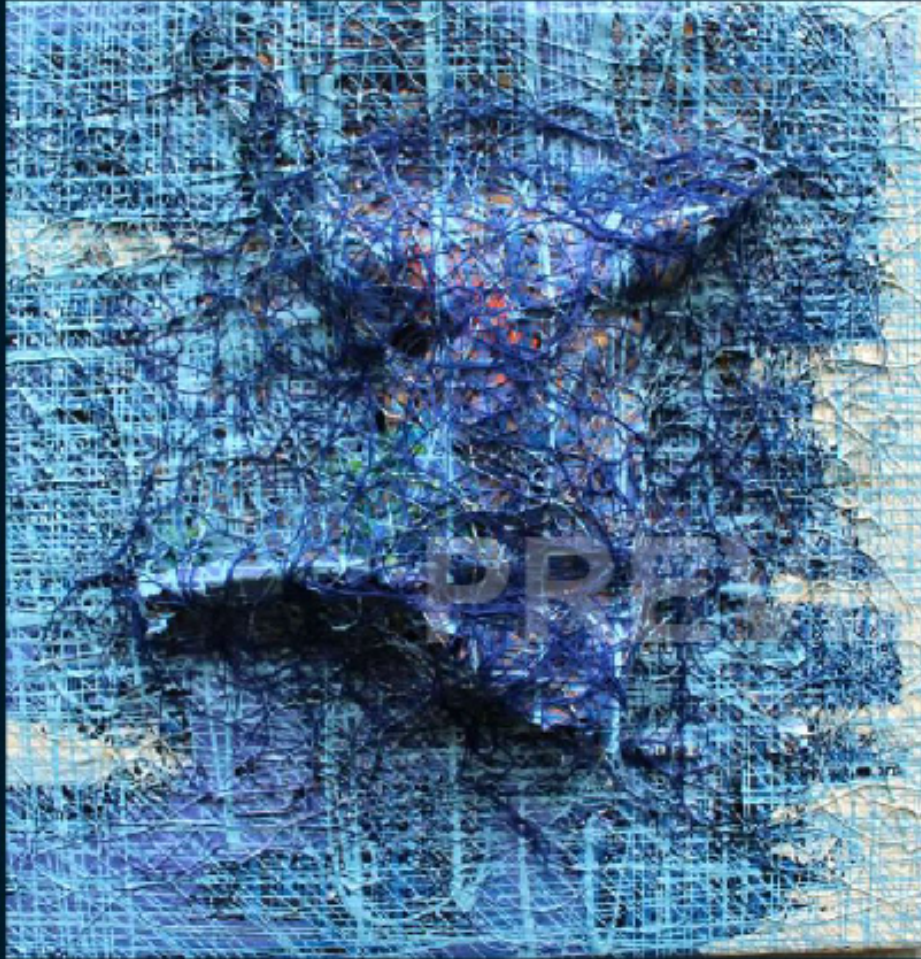


**JOY, MIXED MEDIA
TAPESTRY PAINTING,
19 X 19 X 5 INCHES, 2015**





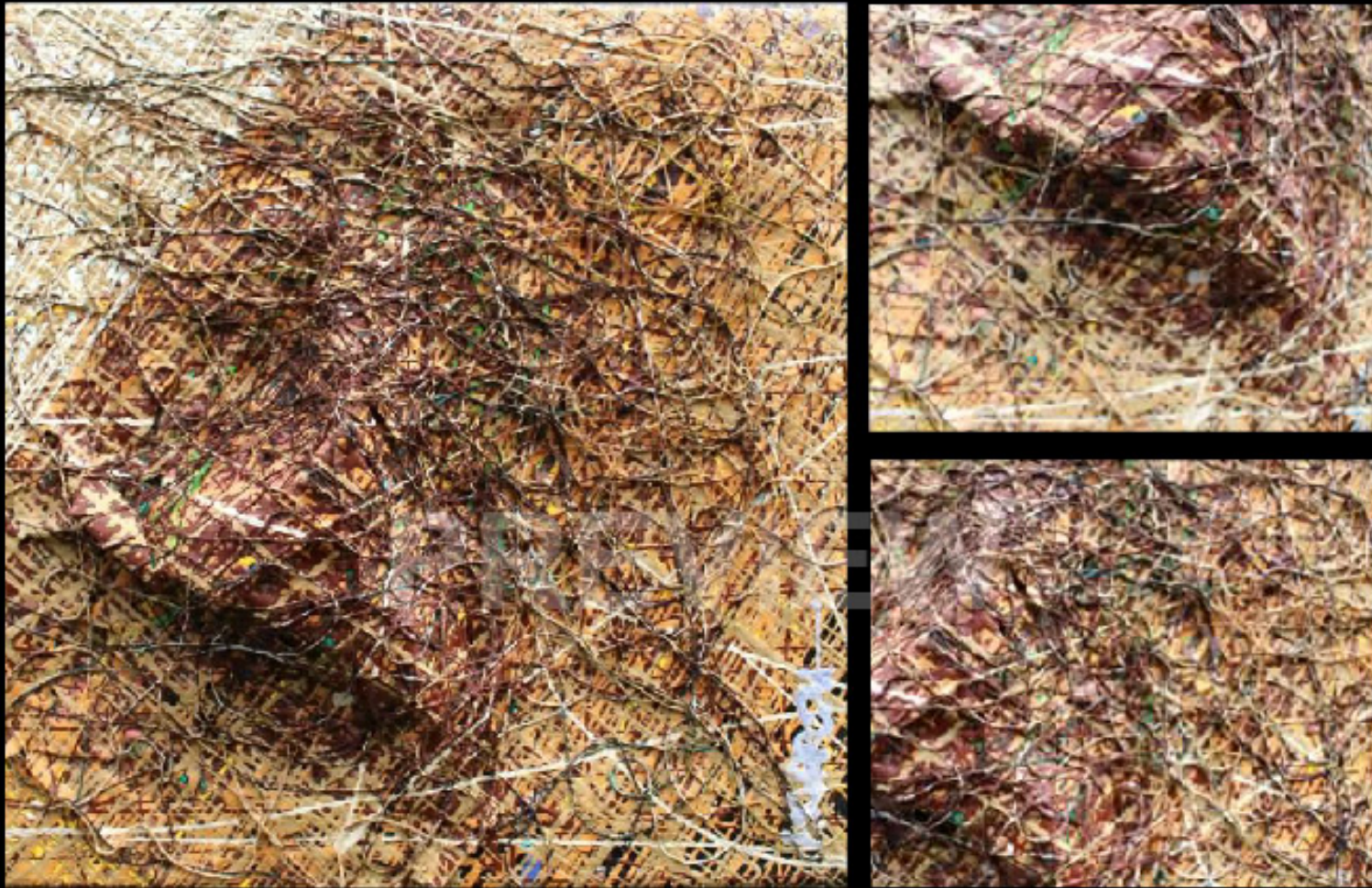
**THE TRUTH, MIXED MEDIA
TAPESTRY PAINTING,
29 X 29 X 5 INCHES, 2015**



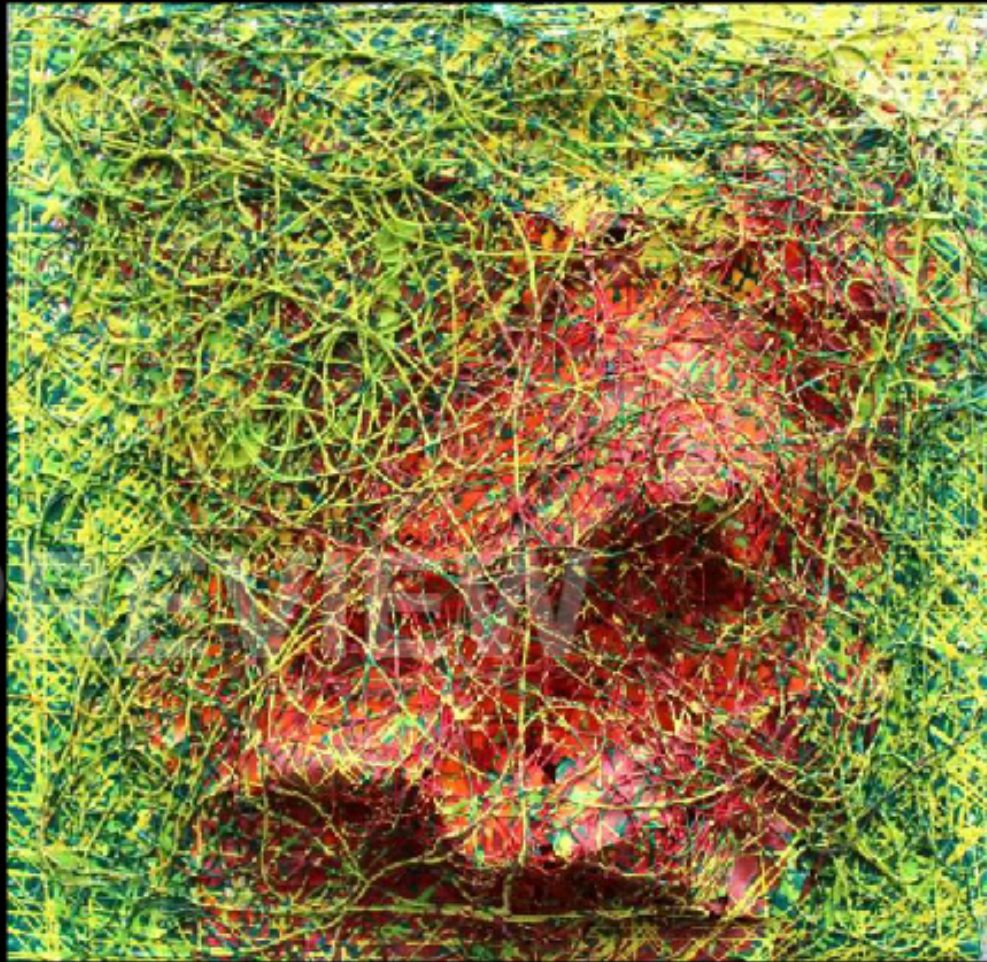
BRIGHT DAY, MIXED MEDIA TAPESTRY PAINTING, 20 X 20 X 5 INCHES, 2015



NEW BEGINNING, MIXED MEDIA TAPESTRY PAINTING, 20 X 20 X 5 INCHES, 2015



DRY SEASON, MIXED MEDIA TAPESTRY PAINTING, 14 X 14 X 4 INCHES, 2015



MY GARDEN, MIXED MEDIA TAPESTRY PAINTING, 14 X 14 X 4 INCHES, 2015



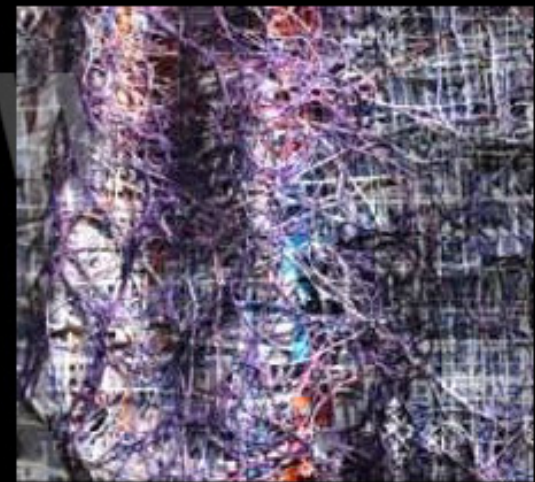
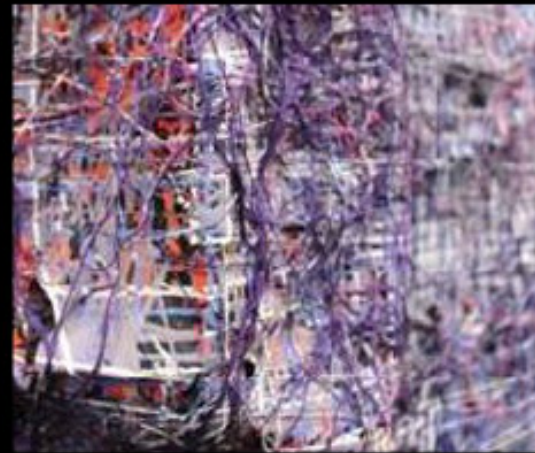
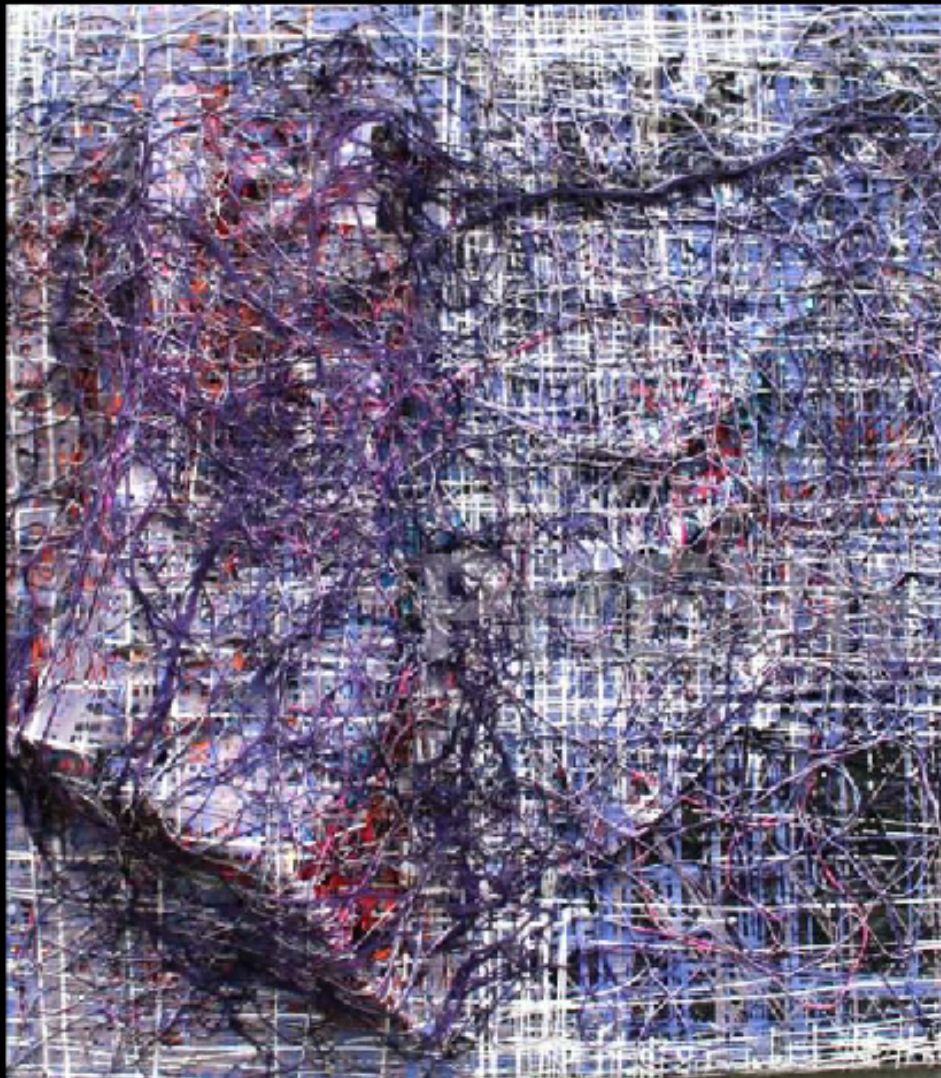
YELLOW ROSE, MIXED MEDIA TAPESTRY PAINTING, 14 X 14 X 4 INCHES, 2015



INBETWEEN HOME, MIXED MEDIA TAPESTRY PAINTING, 20 X 20 X 4 INCHES, 2015



**RISING ABOVE "1", MIXED MEDIA
TAPESTRY PAINTING, 22 X 22 X 5
INCHES, 2015**



**RISING ABOVE "2", MIXED MEDIA
TAPESTRY PAINTING, 20 X 20 X 5
INCHES, 2015**



**RISING ABOVE "3", MIXED MEDIA
TAPESTRY PAINTING, 30 X 20 X 5
INCHES, 2015**

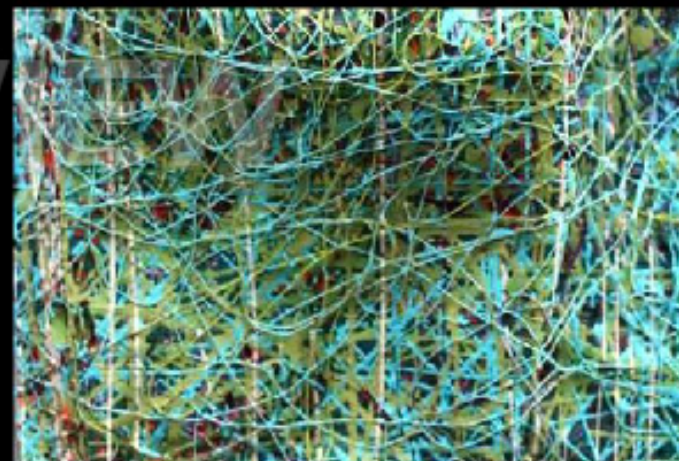


**RISING ABOVE "4", MIXED
MEDIA TAPESTRY PAINTING,
20 X 30 X 5 INCHES, 2015**

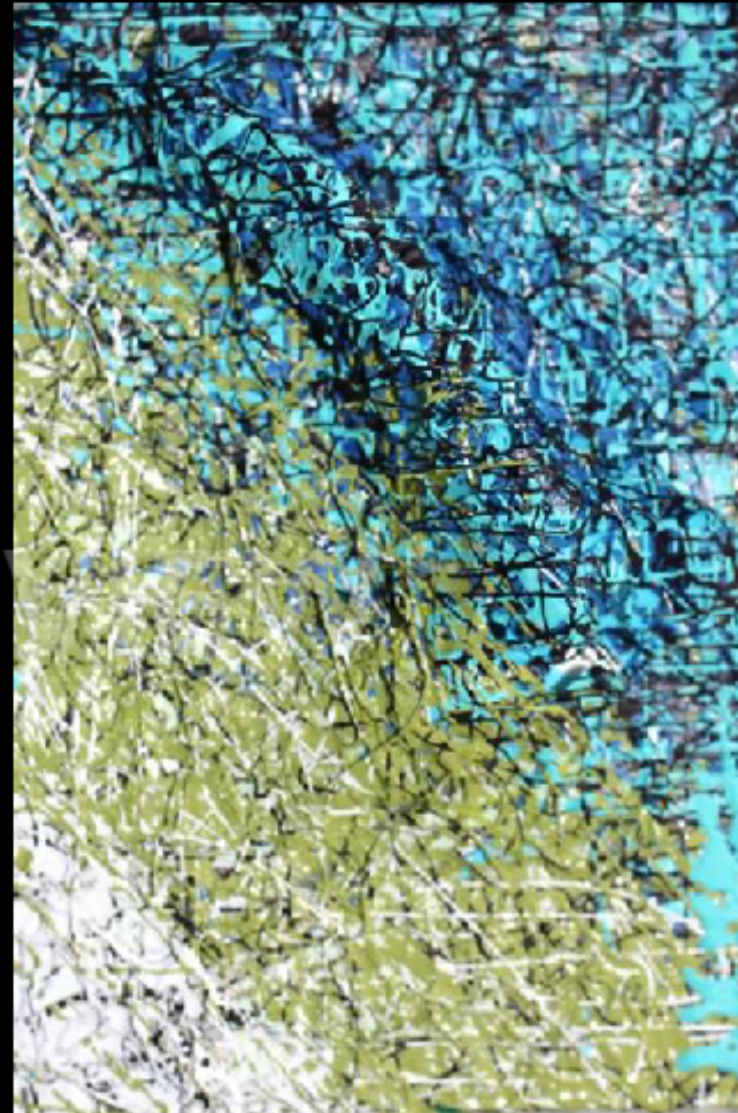


**RISING ABOVE "5",
MIXED MEDIA TAPESTRY
PAINTING, 20 X 30 X 5
INCHES, 2015**

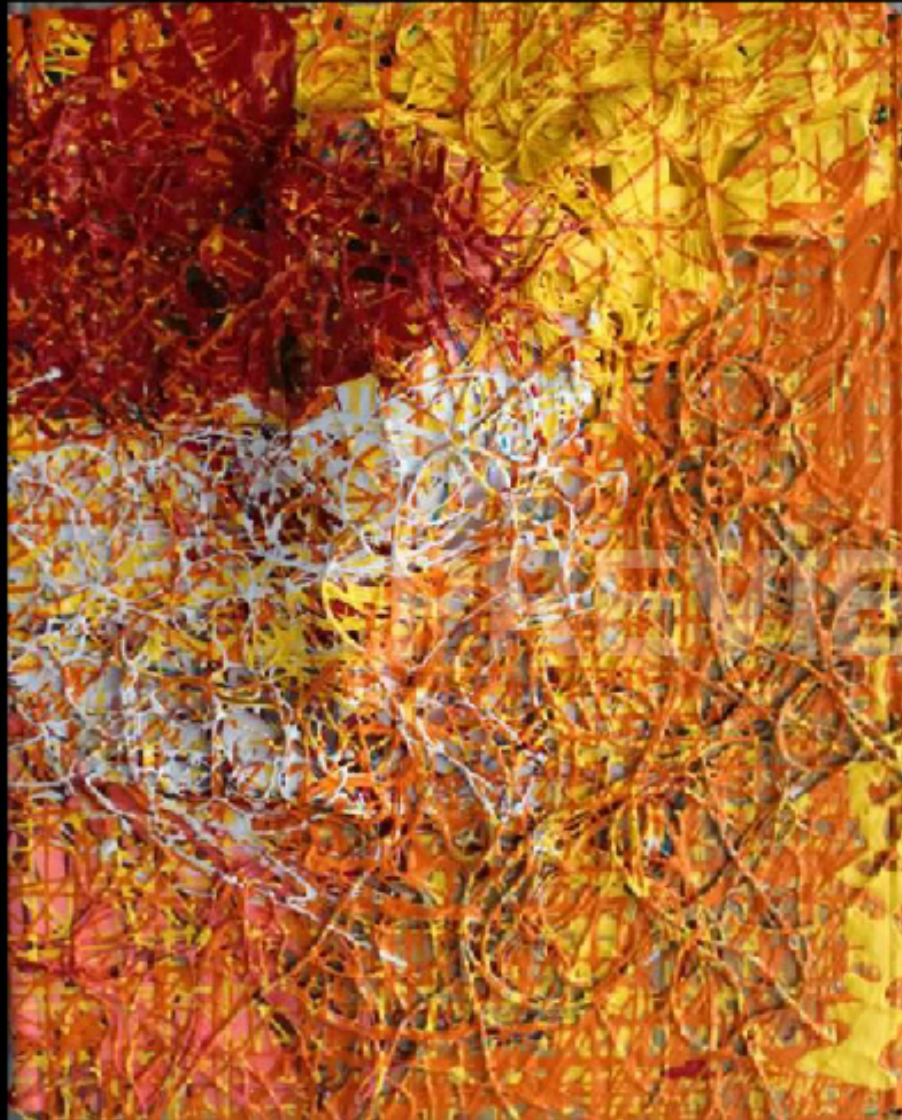




**FERTILE LAND, MIXED MEDIA TAPESTRY PAINTING,
30 X 20 X 5 INCHES, 2015**



**GIFT "12", MIXED MEDIA TAPESTRY PAINTING,
6 X 9 X 4 INCHES,
2015**



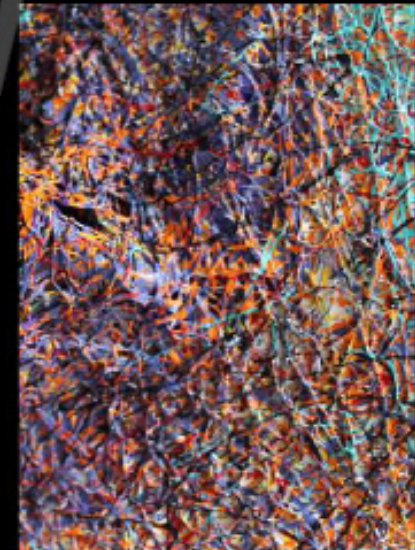
**GIFT "8", MIXED MEDIA TAPESTRY
PAINTING,
9.5 X 8 X 3 INCHES,
2015**



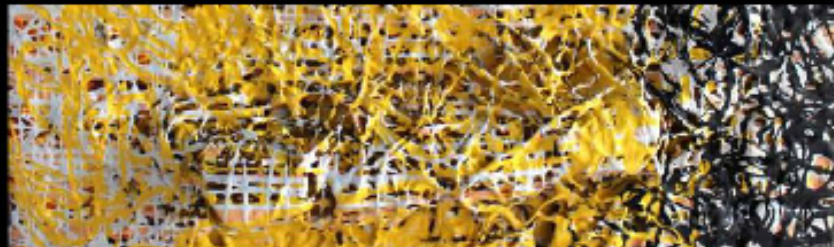
GIFT "2", MIXED MEDIA TAPESTRY PAINTING, 13 X 15 X 5 INCHES, 2015



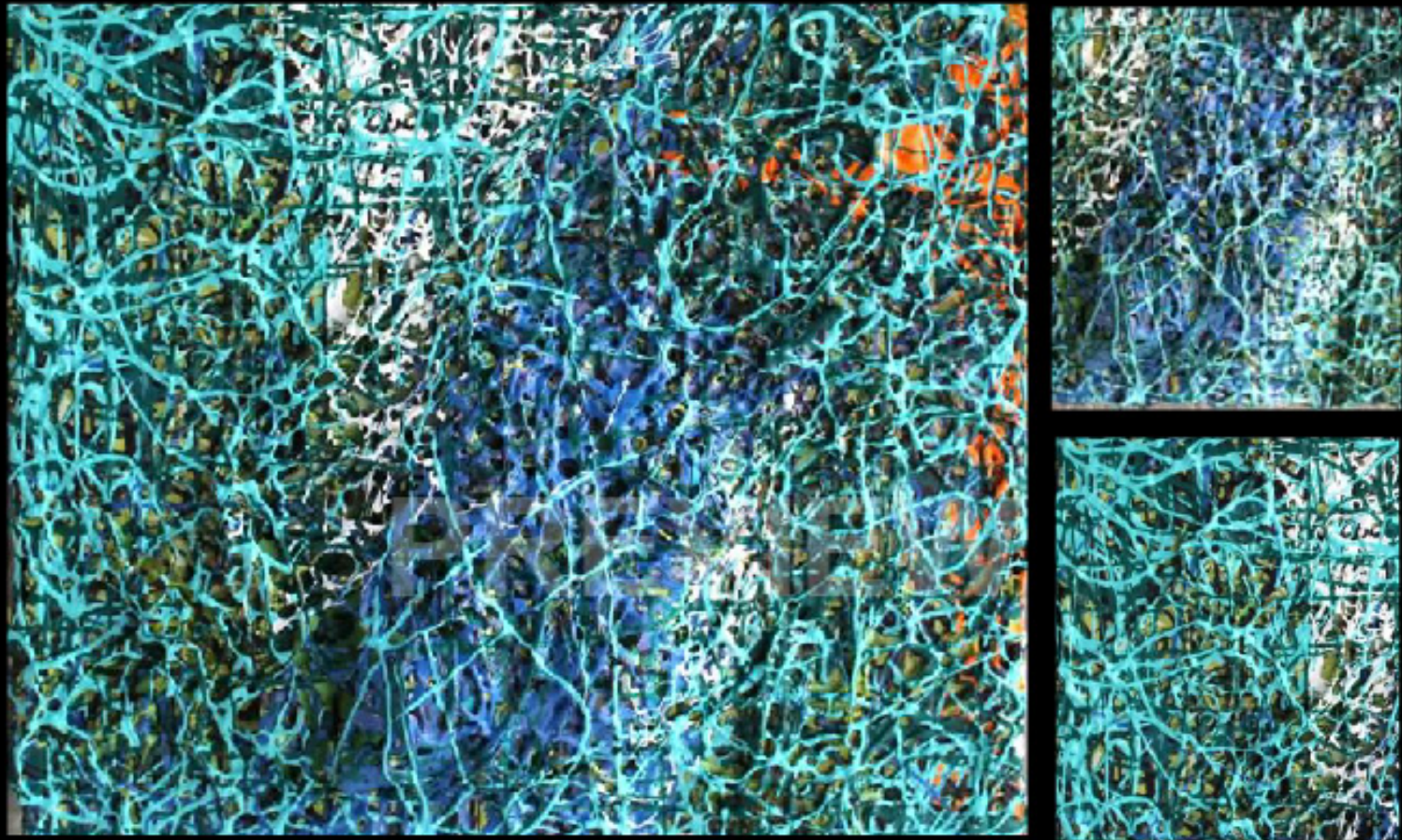
GIFT "11", MIXED MEDIA TAPESTRY PAINTING, 10 X 8 X 3.5 INCHES, 2015



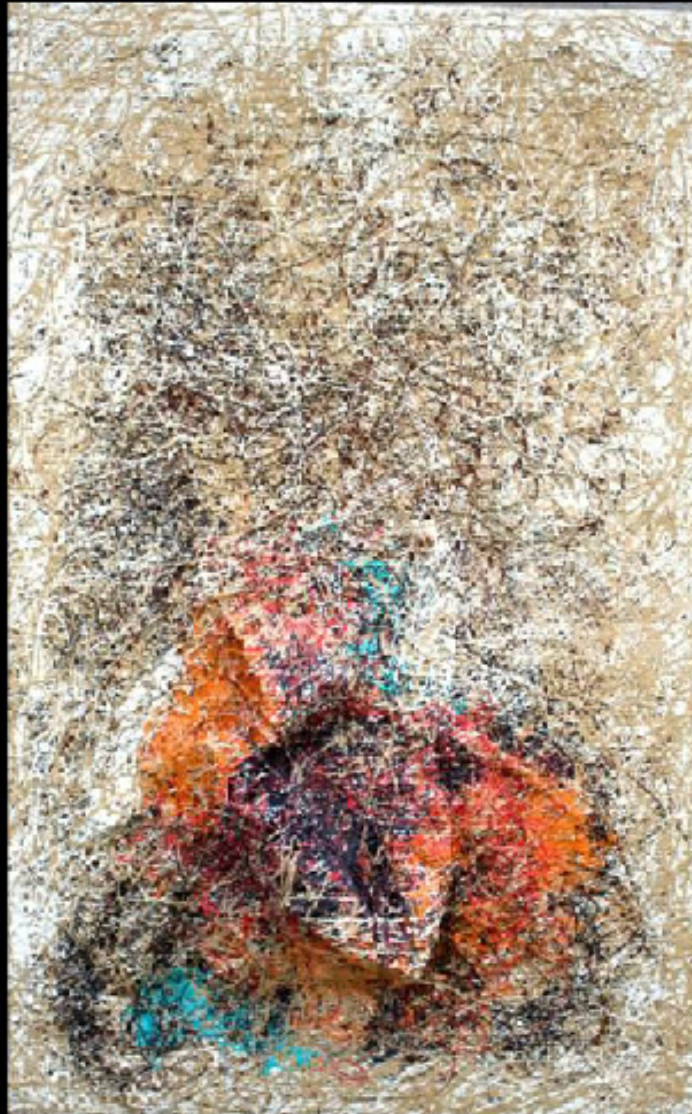
GIFT "1", MIXED MEDIA TAPESTRY PAINTING, 14 X 14 X 6 INCHES, 2015



**GIFT "10", MIXED MEDIA
TAPESTRY PAINTING,
11 X 8 X 4 INCHES,
2015**



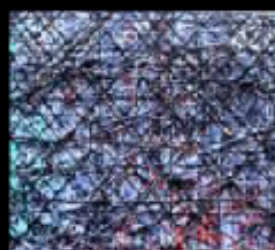
GIFT "9", MIXED MEDIA TAPESTRY PAINTING, 8 X 9 X 2.5 INCHES, 2015



**RISING ABOVE "6", MIXED MEDIA TAPESTRY PAINTING,
30 X 20 X 5 INCHES,
2015**

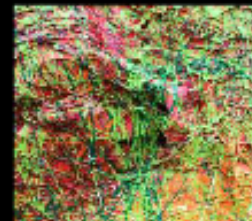


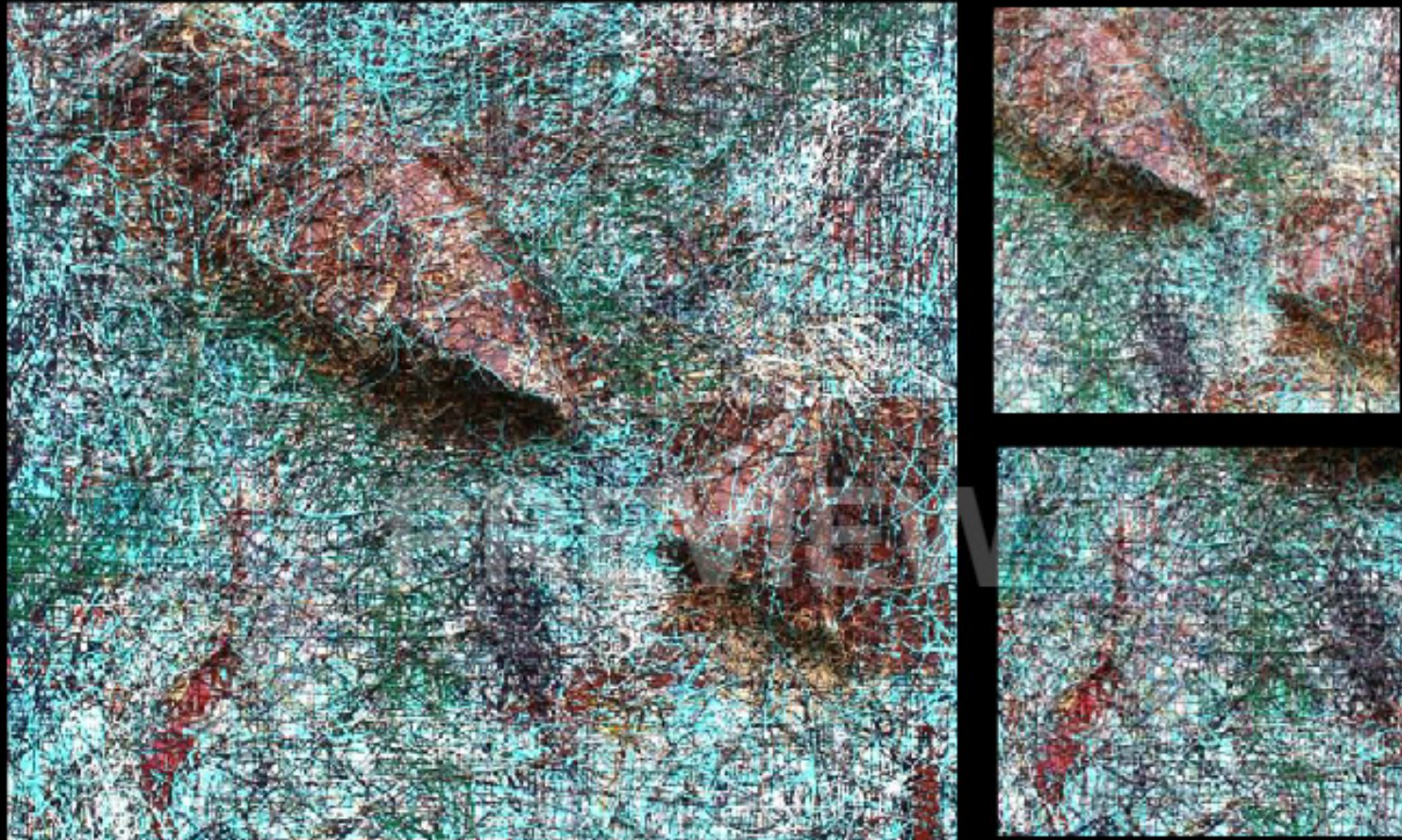
**RISING ABOVE "7",
MIXED MEDIA TAPESTRY
PAINTING,
20 X 30 X 5 INCHES,
2015**



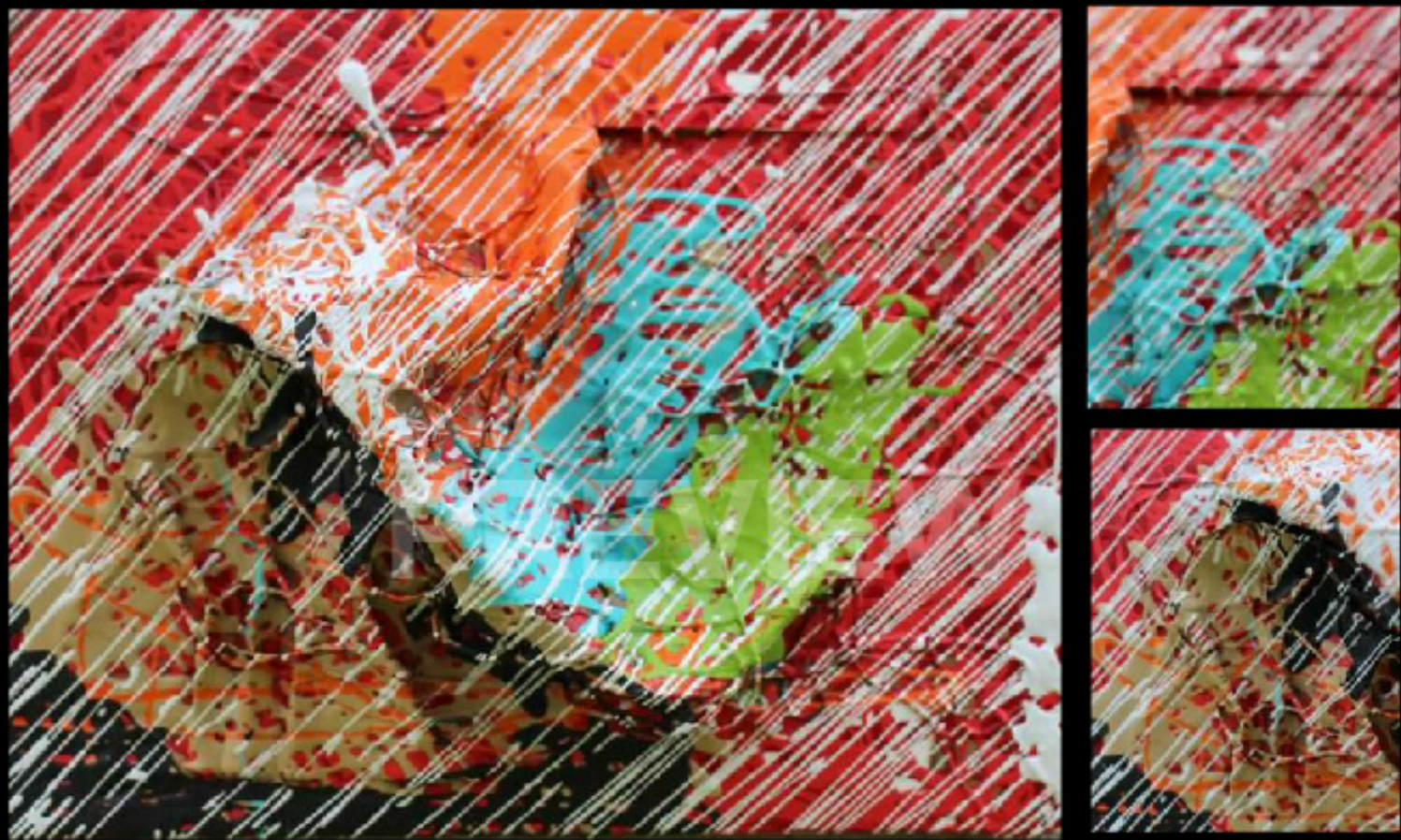


**RISING ABOVE "8", MIXED
MEDIA TAPESTRY PAINTING,
24 X 36 X 4 INCHES,
2015**





RISING ABOVE "9", MIXED MEDIA TAPESTRY PAINTING, 20 X 20 X 4 INCHES, 2015

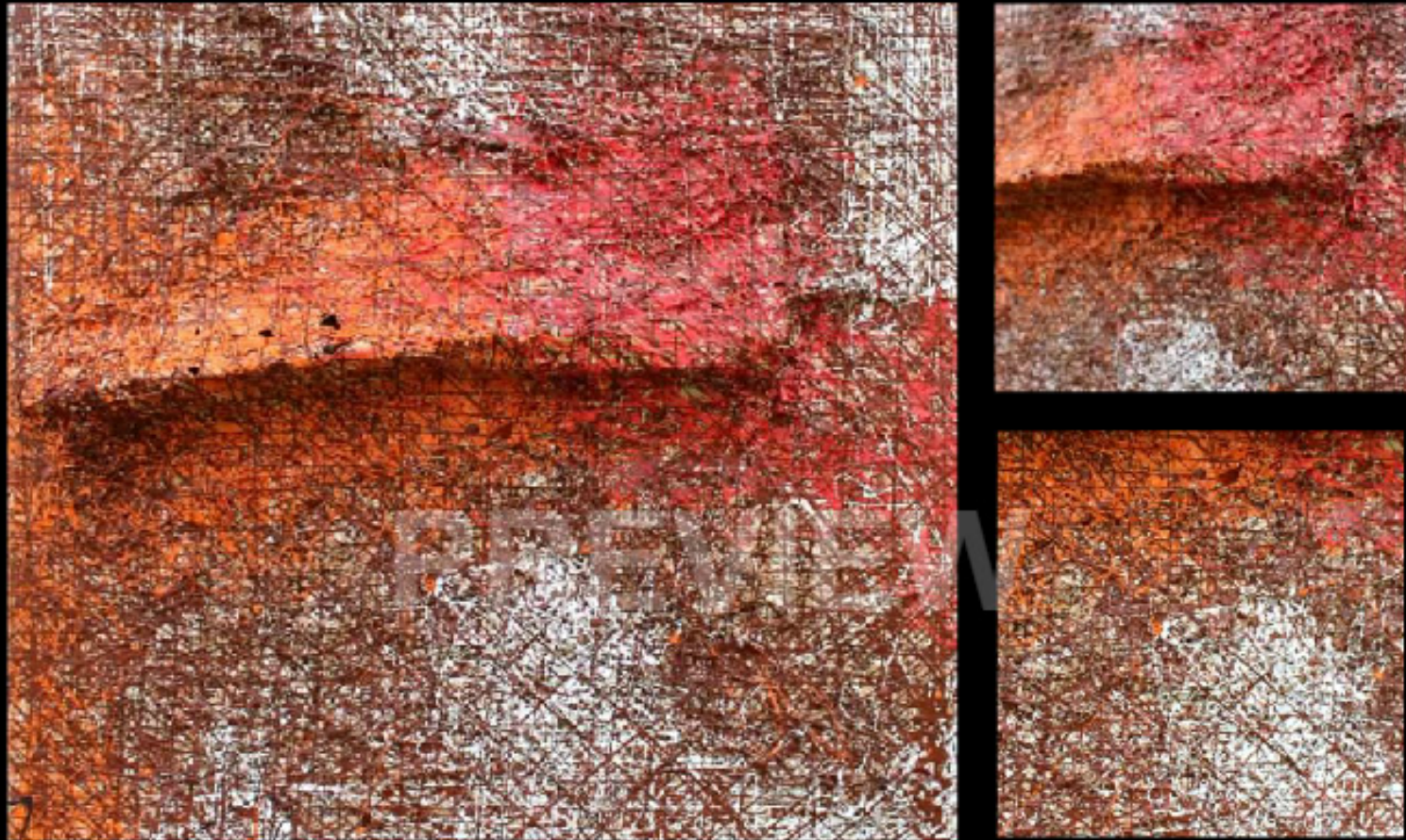


GIFT "13", MIXED MEDIA TAPESTRY PAINTING, 6.5 X 8.5 X 4 INCHES, 2015

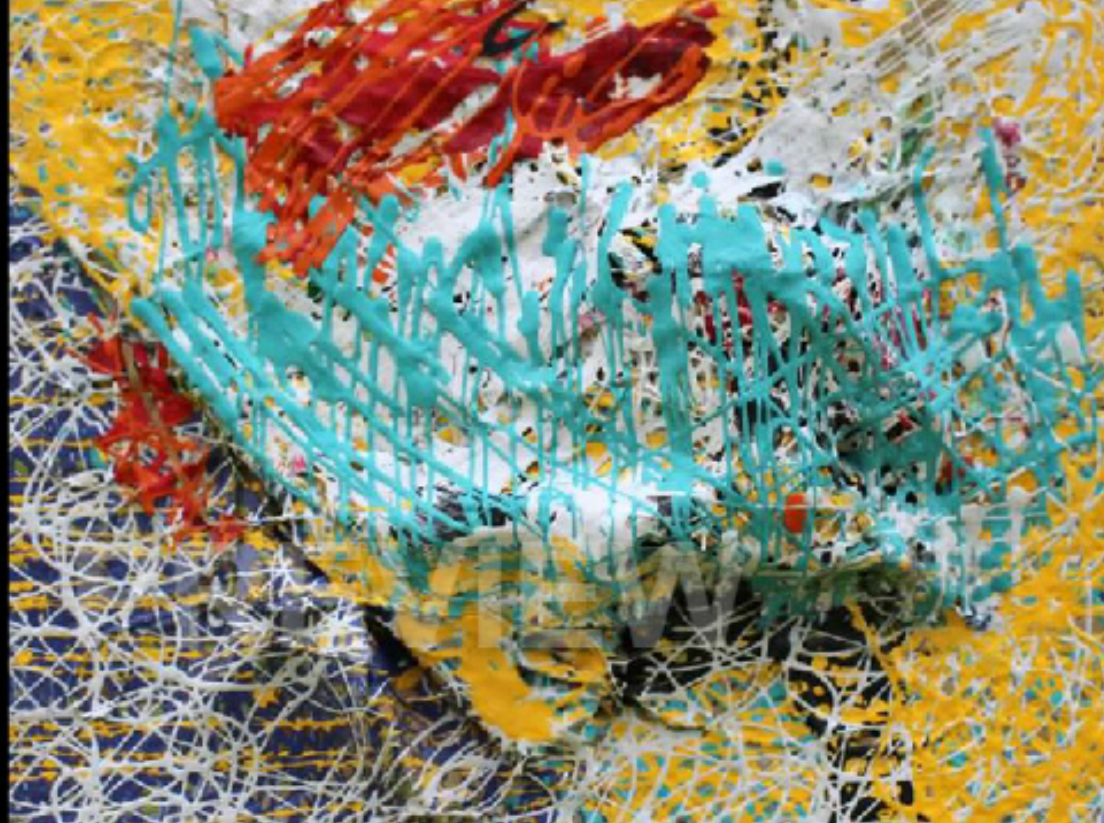


**RISING ABOVE "10", MIXED
MEDIA TAPESTRY PAINTING,
20 X 30 X 4 INCHES,
2015**



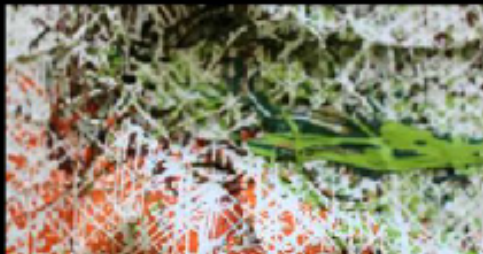


RISING ABOVE "11", MIXED MEDIA TAPESTRY PAINTING, 20 X 20 X 4 INCHES, 2015



**GIFT "5". MIXED MEDIA TAPESTRY
PAINTING,
10 X 7.5 X 3 INCHES,
2015**





**GIFT "6", MIXED MEDIA TAPESTRY
PAINTING,
8 X 10 X 3.5 INCHES,
2015**

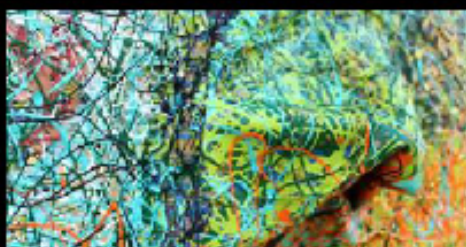


**GIFT "3", MIXED MEDIA TAPESTRY PAINTING,
3 X 9 X 5 INCHES,
2015**



**GIFT "4", MIXED MEDIA TAPESTRY PAINTING,
3 X 9 X 5 INCHES,
2015**





**GIFT "7", MIXED MEDIA TAPESTRY
PAINTING,
12 X 18 X 5 INCHES,
2015**



**HARVEST DAY IS HERE
AGAIN, MIXED MEDIA
TAPESTRY PAINTING,
80 X 78 X 6 INCHES,
2015**



**DURING THE WINTER, MIXED MEDIA
TAPESTRY PAINTING,
40 X 78 X 6 INCHES, 2015**





**DNA, MIXED MEDIA TAPESTRY PAINTING,
40 X 78 X 4 INCHES,
2015**

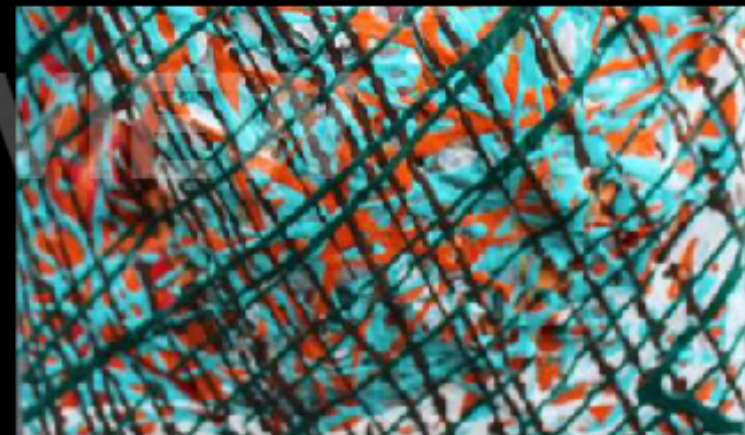




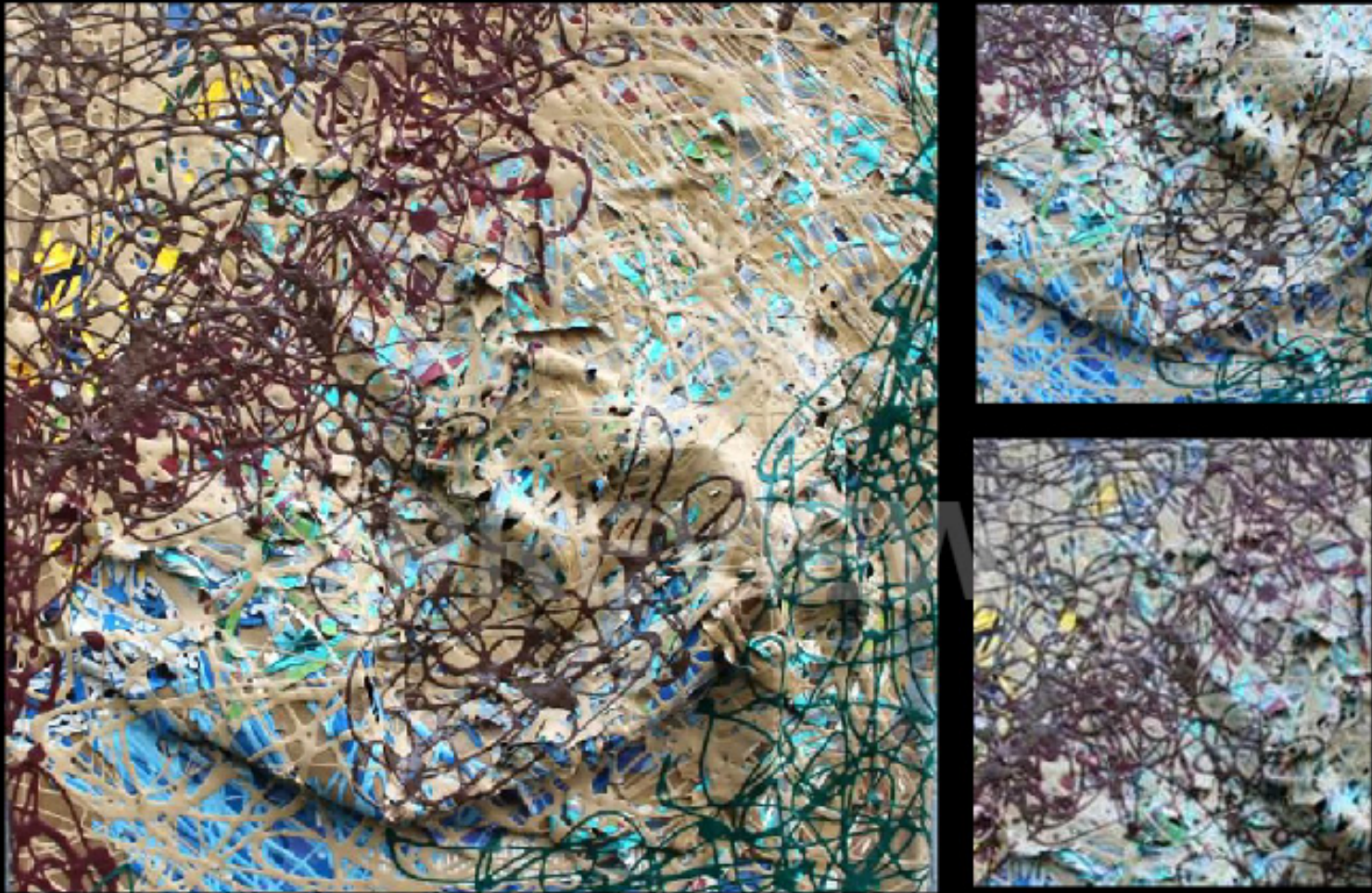
GIFT "14", MIXED MEDIA TAPESTRY PAINTING, 8 X 8.5 X 4 INCHES, 2015



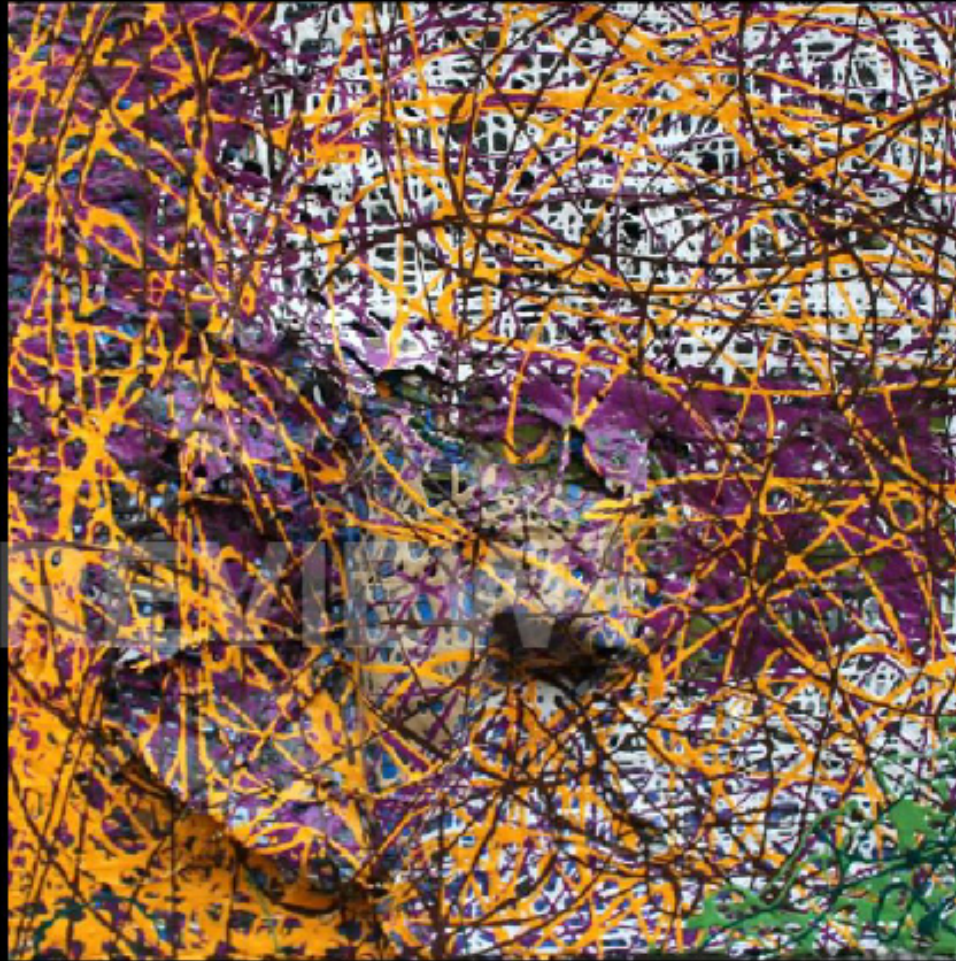
GIFT "15", MIXED MEDIA TAPESTRY PAINTING, 9 X 9 X 2.5 INCHES, 2015



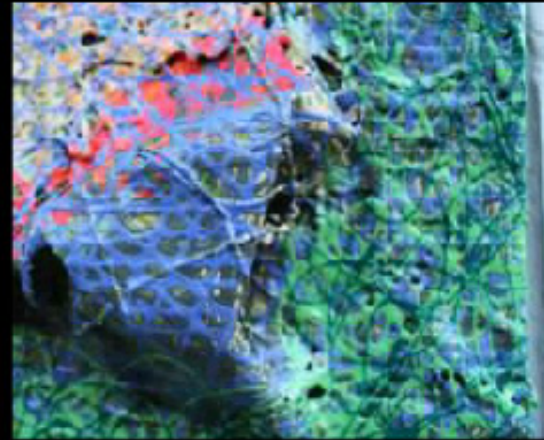
**GIFT "16", MIXED MEDIA TAPESTRY PAINTING,
4 X 6.5 X 2 INCHES,
2015**



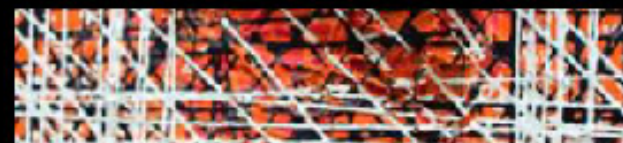
GIFT "17", MIXED MEDIA TAPESTRY PAINTING, 9 X 9 X 3 INCHES, 2015



GIFT "15", MIXED MEDIA TAPESTRY PAINTING, 10 X 10 X 4 INCHES, 2015



GIFT "19", MIXED MEDIA TAPESTRY PAINTING, 10 X 10 X 4 INCHES, 2015



**GIFT "20", MIXED MEDIA TAPESTRY PAINTING,
10 X 8 X 4 INCHES,
2015**

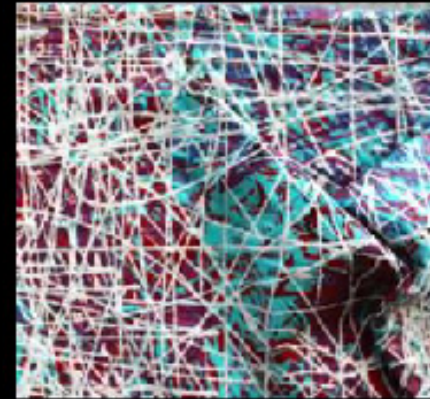
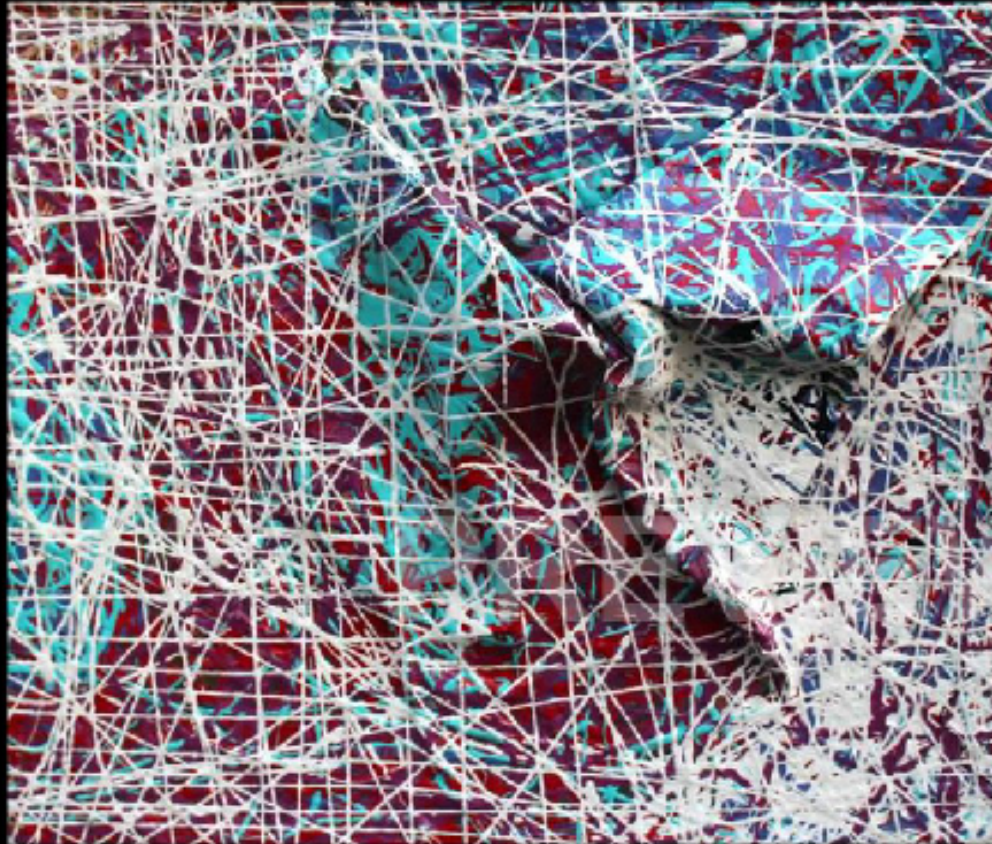
**GIFT "21", MIXED MEDIA TAPESTRY PAINTING,
10 X 7 X 4 INCHES,
2015**



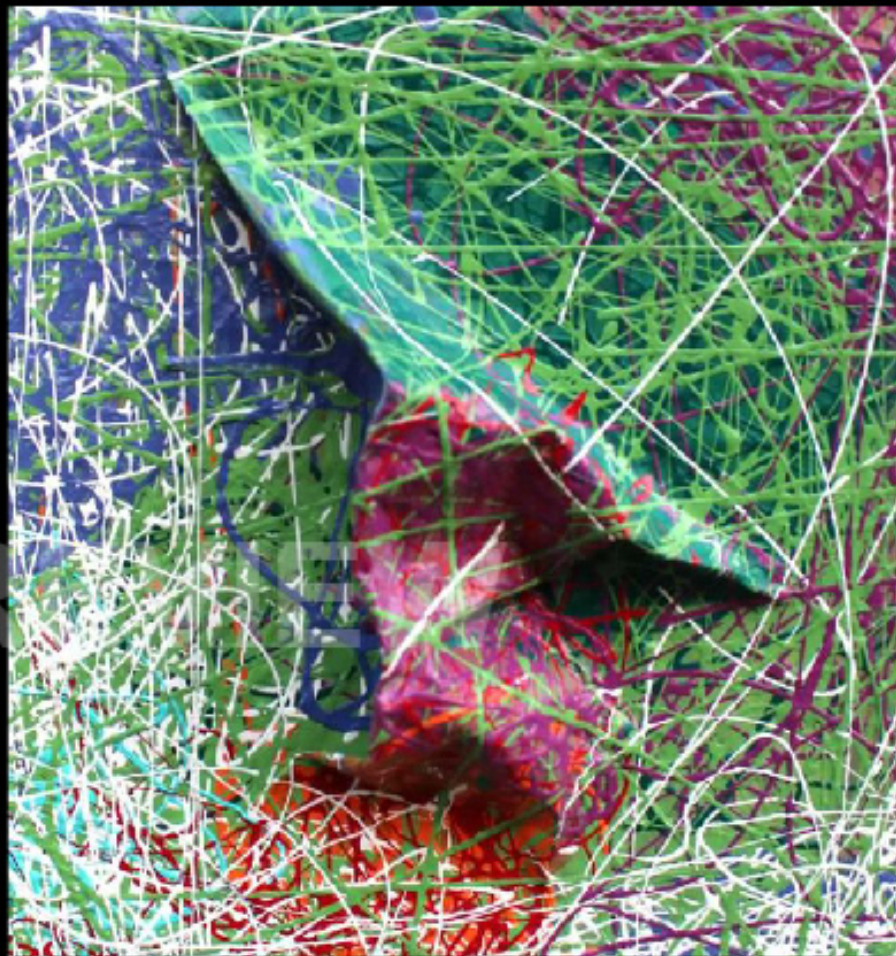
GIFT "22", MIXED MEDIA TAPESTRY PAINTING, 10 X 10 X 4 INCHES, 2015



GIFT "23", MIXED MEDIA TAPESTRY PAINTING, 10 X 9 X 4 INCHES, 2015



GIFT "24", MIXED MEDIA TAPESTRY PAINTING, 10 X 9 X 4 INCHES, 2015



GIFT "25", MIXED MEDIA TAPESTRY PAINTING, 8.5 X 9 X 4 INCHES, 2015



GIFT "26", MIXED MEDIA TAPESTRY PAINTING, 10 X 9 X 4 INCHES, 2015



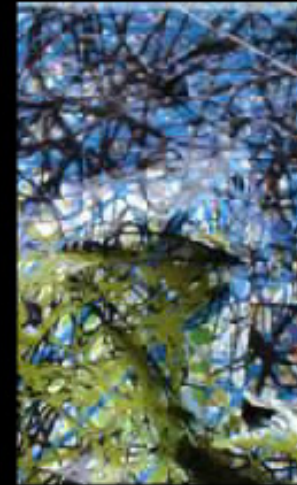
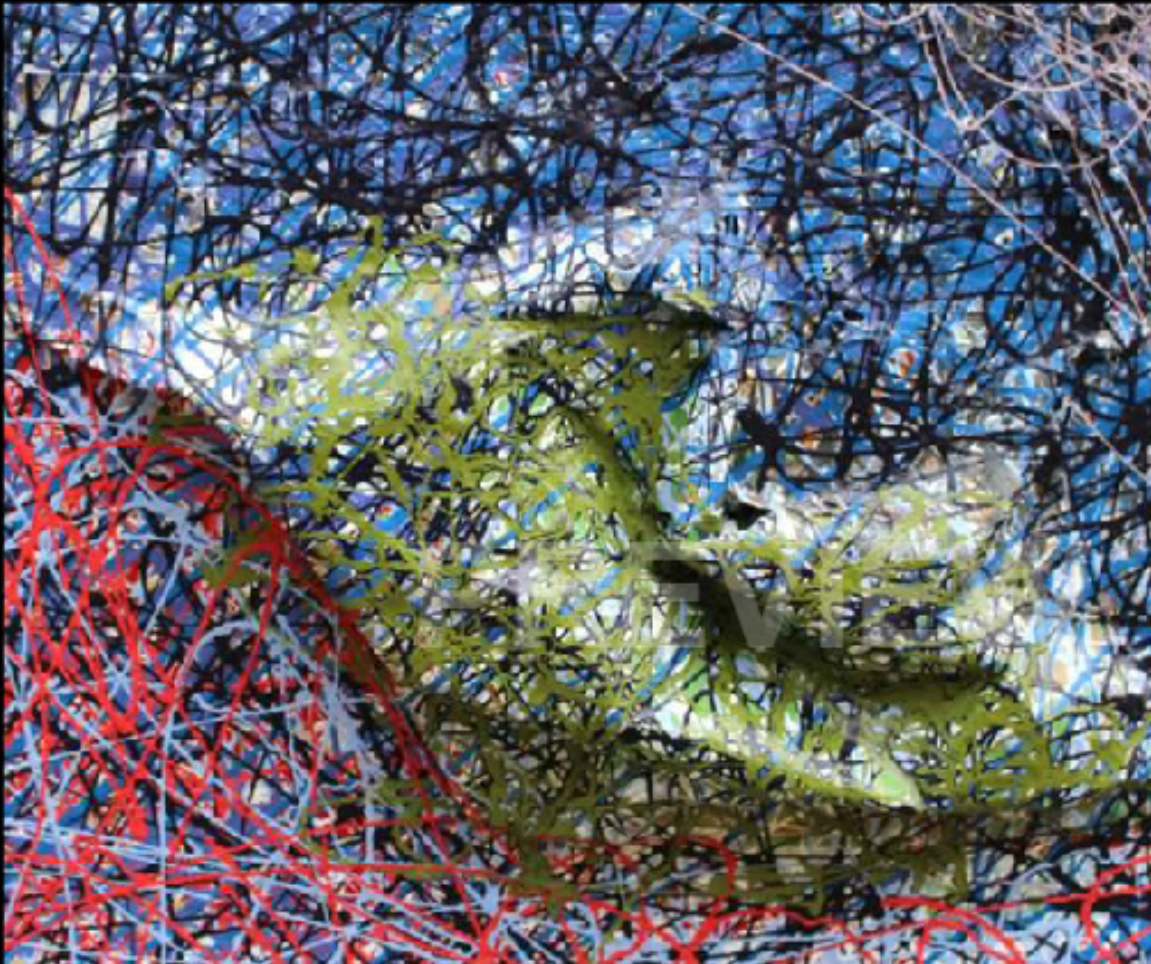
GIFT "27", MIXED MEDIA TAPESTRY PAINTING, 8 X 7.5 X 3.5 INCHES, 2015



GIFT "28", MIXED MEDIA TAPESTRY PAINTING, 16 X 14 X 5 INCHES, 2015



GIFT "29", MIXED MEDIA TAPESTRY PAINTING, 10.5 X 14 X 5 INCHES, 2015



GIFT "30", MIXED MEDIA TAPESTRY PAINTING, 10.5 X 14 X 5 INCHES, 2015

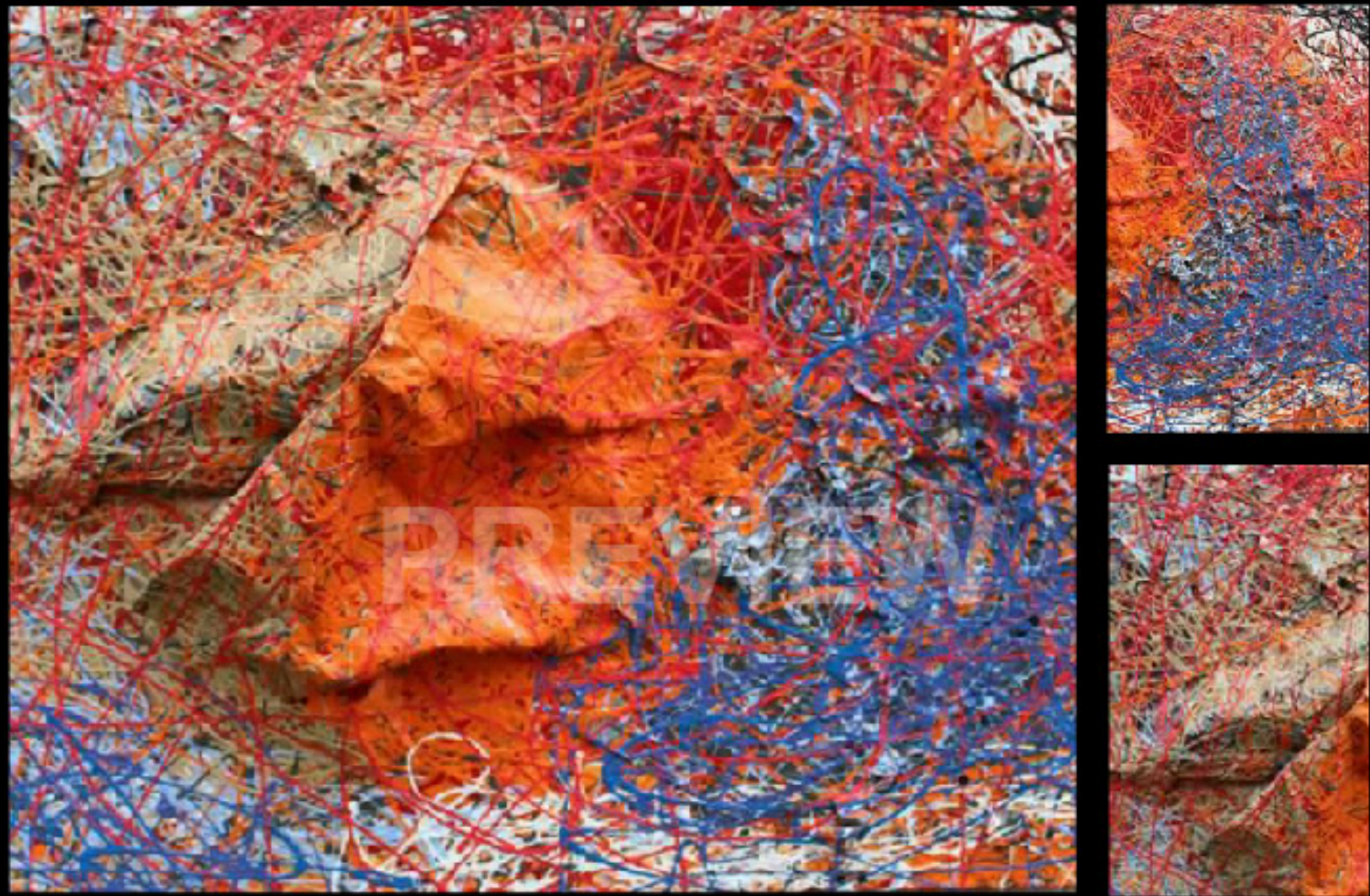


GIFT "31", MIXED MEDIA TAPESTRY PAINTING, 10.5 X 14 X 5 INCHES, 2015



**GIFT "32", MIXED MEDIA TAPESTRY PAINTING,
10.5 X 14 X 5 INCHES,
2015**





GIFT "33", MIXED MEDIA TAPESTRY PAINTING, 10.5 X 14 X 5 INCHES, 2015



**IGBE YAWO / WEDDING CEREMONY, MIXED MEDIA
TAPESTRY PAINTING,
6 X 7 FT,
2015**



OPO / WIDOW, MIXED MEDIA TAPESTRY PAINTING, 6 X 7 FT, 2015



IBERE / QUESTION, MIXED MEDIA TAPESTRY PAINTING, 6 X 7 FT, 2015



QUEST, MIXED MEDIA TAPESTRY PAINTING, 6 X 7 FT, 2015



ORO THROUGH THE NEEDLE, MIXED MEDIA SCULPTURE INSTALLATION / TAPESTRY PAINTING, 16 X 5 X 5 FT, 2015



GALLERY VIEW OF ADITTU / PUZZLE, EXHIBITION AT THE MCKINNEY AVENUE CONTEMPORARY
DALLAS MAY / JUNE 2015



**ADITTU / PUZZLE, MIXED MEDIA TAPESTRY PAINTING,
10 x 15 FT,
2015**