

# OWO IDAN/MAGIC HANDS



OLANIYI RASHEED AKINDIYA AKIRASH

[www.artwithakirash.com](http://www.artwithakirash.com)







2001 - 2003

# TERRACOTTA WORKS

[www.artwithakirash.com](http://www.artwithakirash.com)





**ACCUSING FINGER, TERRACOTTA ON  
WOOD, 33X34X23CM, 2002**





**FIRST FOOD, TERRACOTTA,  
40X25X14CM, 2003**



**BARREN  
VESSEL,  
TERRACOTT  
A ON WOOD,  
68X20X20CM  
, 2003**



[www.artwithakirash.com](http://www.artwithakirash.com)





**BIRTH INSPIRATION, TERRACOTTA,  
18X14X14CM, 2002**





[www.artwithakirash.com](http://www.artwithakirash.com)

**ISOKAN/UNITY, TERRACOTTA,  
100X35X35CM 2003.**





**GOLFER, TERRACOTTA,  
20X12X12CM, 2001**





**POWER HOUSE, TERRACOTTA,  
70X18X18CM, 2002**



**OWO IDAN/MAGIC HANDS(TERRACOTTA'S & ENVIRONMENTAL SCULPTURES 2001-2006)**



**ACROBATIC DANCER, TERRACOTTA ON WOOD PAINTING WITH ENAMEL AND GOLD DUST, 28X10X18CM, 2003**





**IKOKO OPE, TERRACOTA PAINT WITH  
ACRYLIC, CANE, 58X30X35CM, 2002**





**A DROP "1", TERRACOTTA ON WOOD, ACRYLIC  
PAINT, ELECTRIC LAMPHOLDER, WIRE,  
40X20X20CM, 2001**



**OWO IDAN/MAGIC HANDS(TERRACOTTA'S & ENVIRONMENTAL SCULPTURES 2001-2006)**



**SAVAGE, TERRACOTTA, ACRYLIC  
PAINTS, 25X15X15CM, 2003**



**OWO IDAN/MAGIC HANDS(TERRACOTTA'S & ENVIRONMENTAL SCULPTURES 2001-2006)**



**SEKERE LOBA'UJO, TERRACOTTA, 30X12X12CM, 2003**

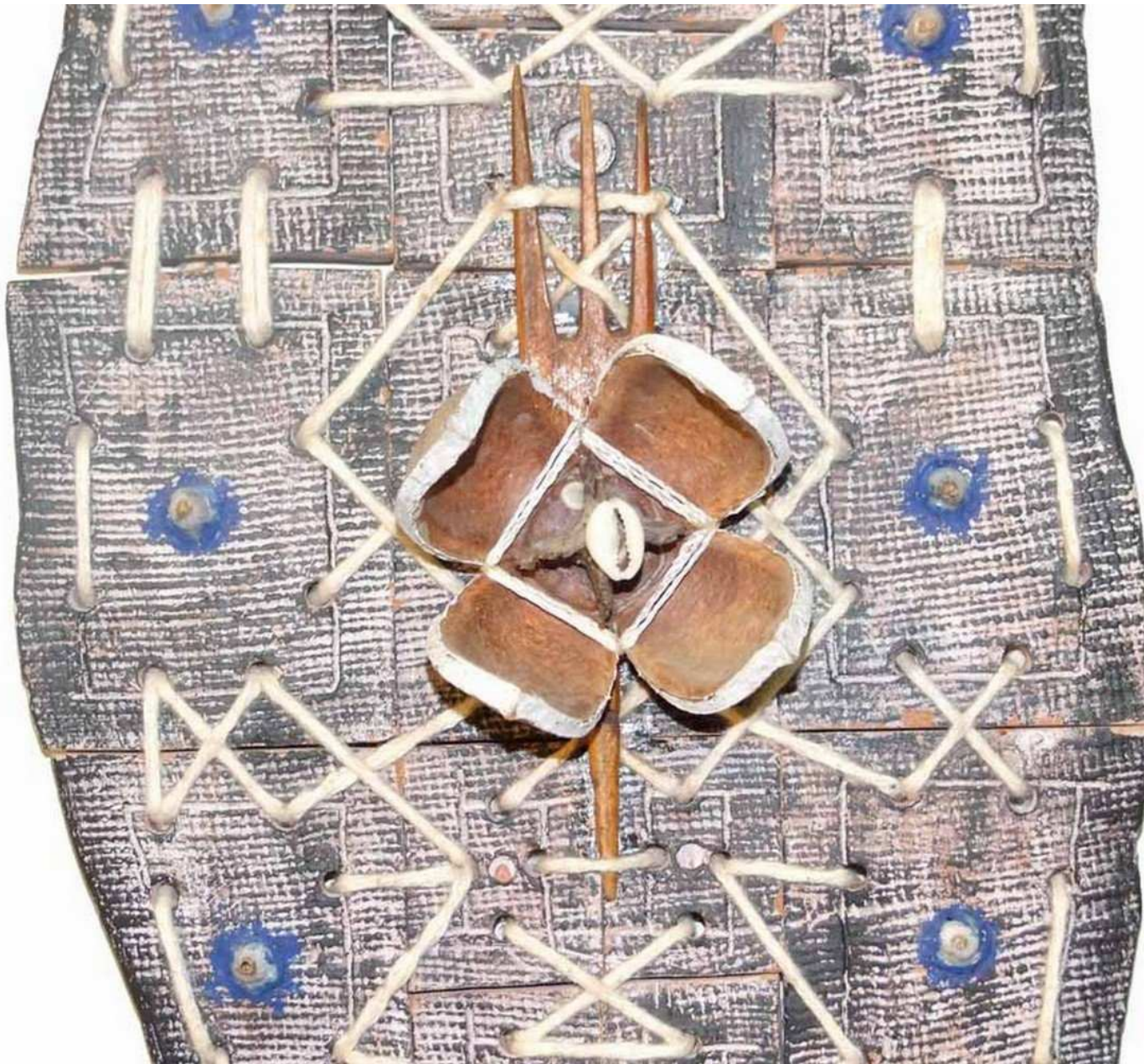


**A DROP "2", TERRACOTTA  
ON WOOD, ENAMEL  
PAINTS, GOLD DUST,  
80X30X30, 2002.**



AKIRASH





[www.artwithakirash.com](http://www.artwithakirash.com)

**FERTILITY BOARD, TERRACOTTA, SEED  
POD, ROPES, WOODEN COMB, COWRIES  
SHELL, WOODED STICK, 74X62X8CM, 2003.**





**EYE & NOSE, TERRACOTTA, GLOSS  
PAINT, GOLD DUST, 13X10X8CM,  
2001.**







[www.artwithakirash.com](http://www.artwithakirash.com)

**TREE OF WEALTH, TERRACOTTA, BACK OF  
TREES, PLASTIC, LEAF, GLUE, BURLAP,  
KEY, 43X43X23CM, 2002**





2004 - 2006

**ENVIRONMENTAL / ORGANIC**

**ART WORKS**

[www.artwithakirash.com](http://www.artwithakirash.com)





**THE RIGHT TIME, MIXEDMEDIA  
SCULPTURE, 2004**





**VALLEY OF DARTY, MIXEDMEDIA  
SCULPTURE, 150X48X48CM, 2004**



**OWO IDAN/MAGIC HANDS(TERRACOTTA'S & ENVIRONMENTAL SCULPTURES 2001-2006)**



**DRIVE PROTECTED, MIXEDMEDIA  
SCULPTURE, 160X67X67CM, 2004**





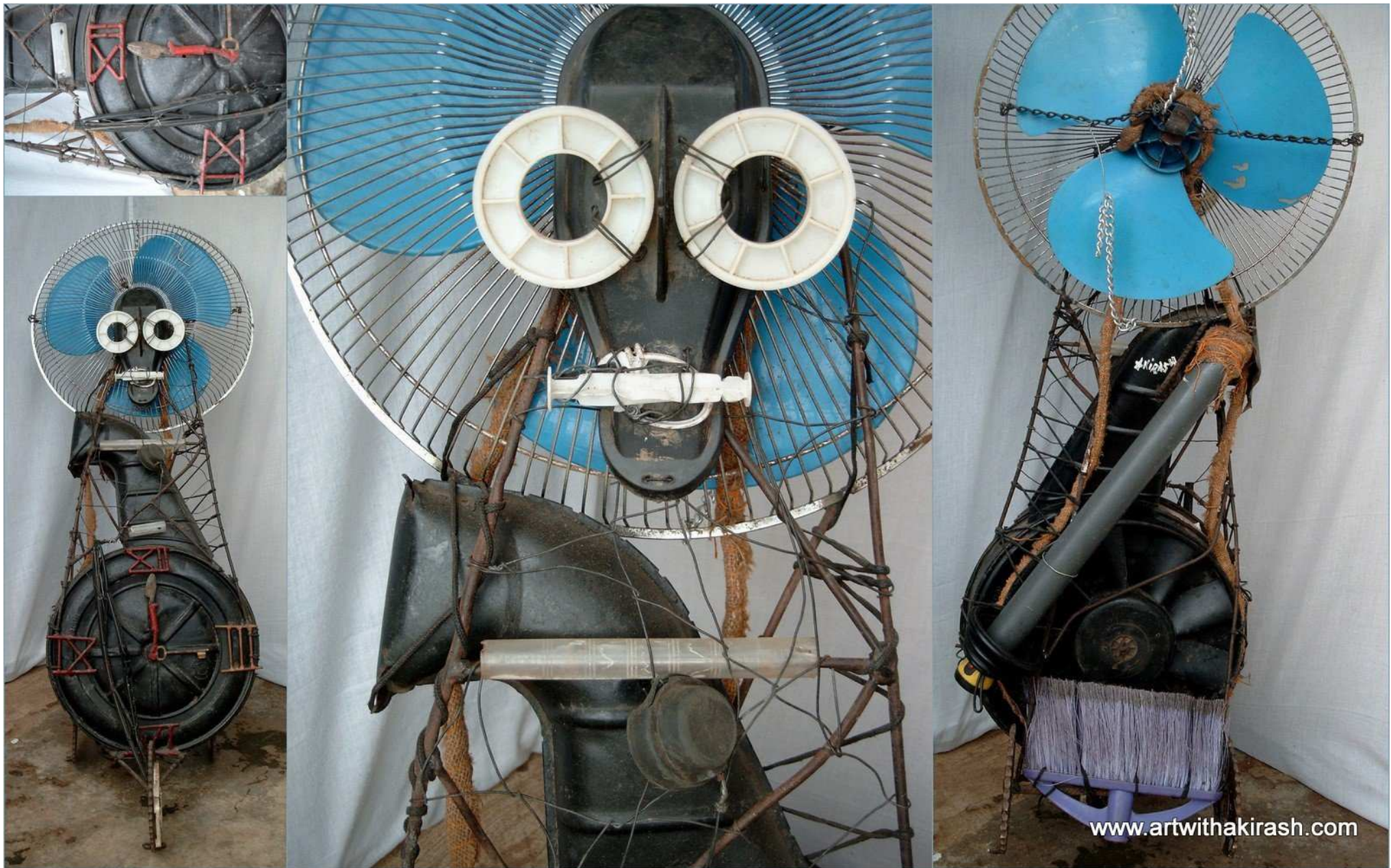
**EVERYDAY OF OUR LIFE, MIXED MEDIA  
SCULPTURE, 160X50X50CM, 2004**





**EDUCATION IMBALANCE, MIXEDMEDIA  
SCULPTURE/INSTALLATION,  
190X72X60CM, 2005**





**STOPPED WATCH, MIXEDMEDIA  
SCULPTURE, 125X65X45CM, 2005**





**G-8, MIXEDMEDIA SCULPTURE,  
138X54X42CM, 2005**





[www.artwithakirash.com](http://www.artwithakirash.com)

**MR. SEARCHER, MIXED MEDIA  
SCULPTURE, 100X33X33CM, 2005**





**SOULS EXPORTER, MIXEDMEDIA  
SCULPTURE, 117X45X85CM, 2006**





**MR. MELODY, MIXEDMEDIA  
SCULPTURE, 85X85X60CM, 2006**





**GIVE PEACE A CHANCE, MIXEDMEDIA  
SCULPTURE/INSTALLATION,  
200X65X98CM, 2006**





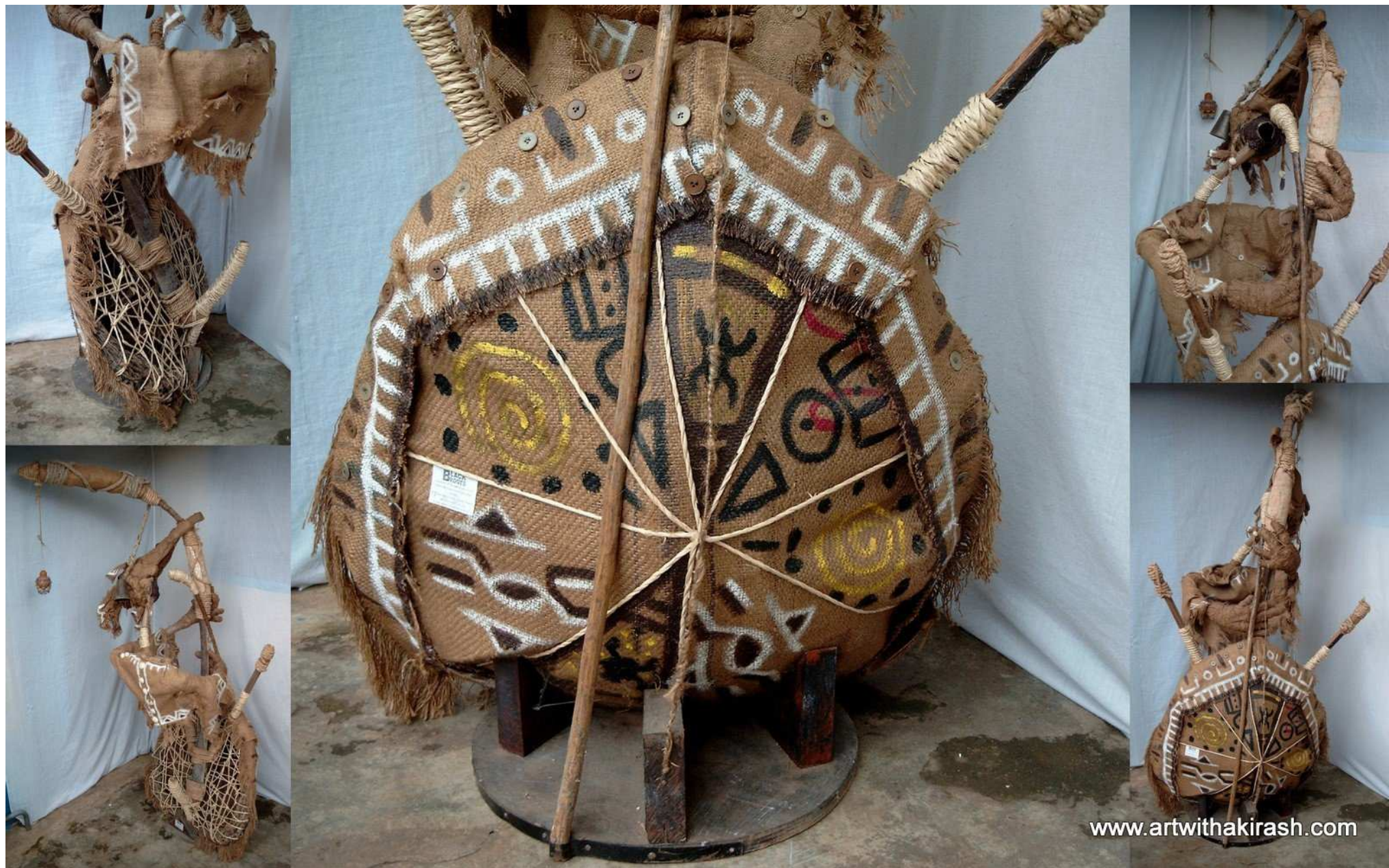
**ARE WE SAFE, MIXEDMEDIA  
SCULPTURE/INSTALLATION,  
115X60X35CM, 2006**





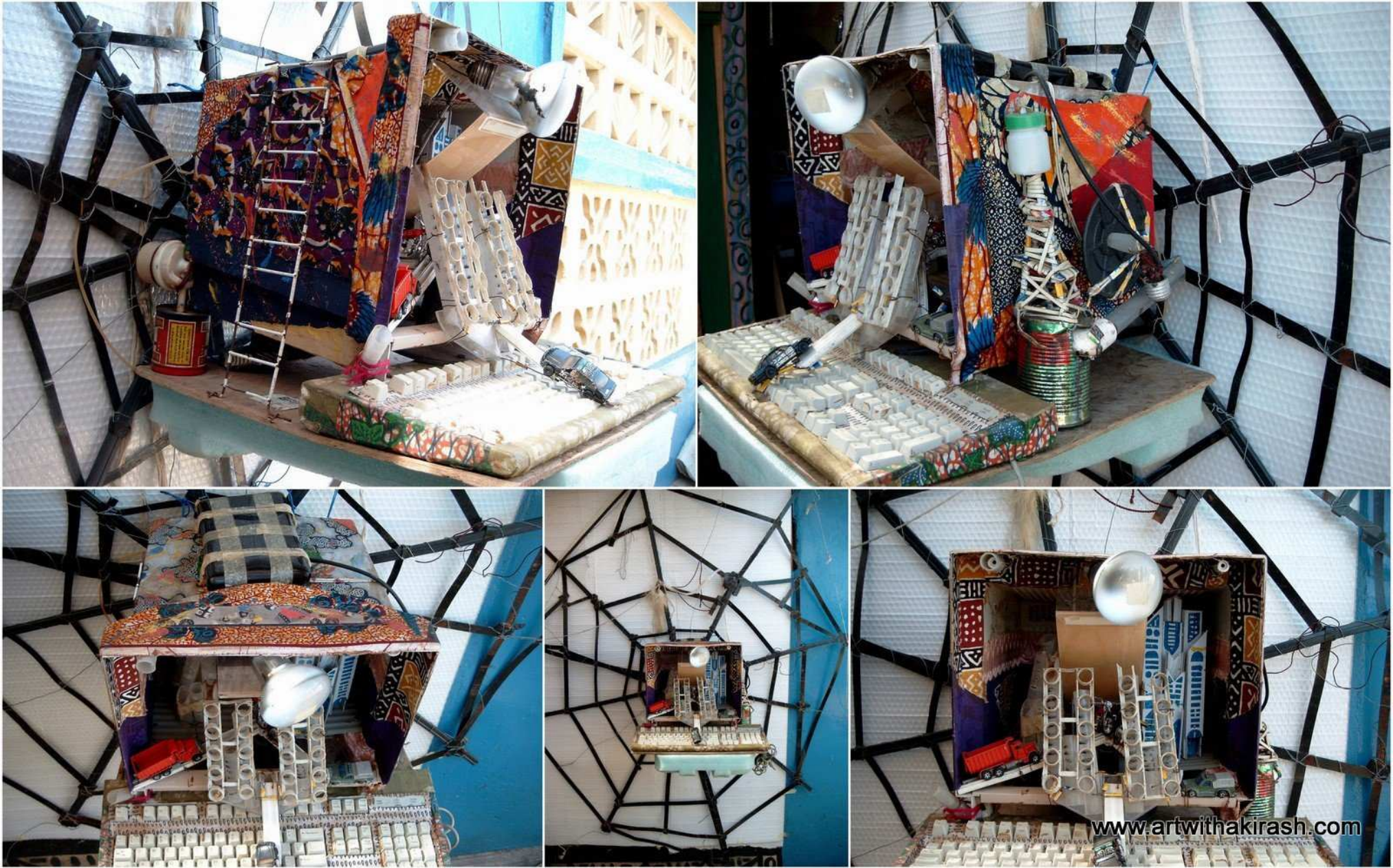
**HERO & HEROINE, MIXEDMEDIA  
SCULPTURE, 120X86X35CM, 2006**





**JUST IMAGINE, MIXEDMEDIA  
SCULPTURE, 180X130X100CM, 2006**





**WWW.CIVILIZATION.COM, MIXEDMEDIA  
SCULPTURE/INSTALLATION, 170X  
160X60CM, 2005**











## ARTIST'S ACKNOWLEDGEMENTS

I would like to give me thanks to Almighty ALLAH the Beneficent , the merciful for his gift of knowledge, wisdom and strenght to see me through all those moments.

I would to thanks my friend at the ceramic studio at the art center in Accra, uncle Ben, Dr.marcus Mann, Late Joe Gazare, Musah swallah, kamoru, Ahmeed, Mr. GWK Dawson, Mrs. virginia Ryan, Katharina Dittschar, Fca Ghana, many others who i can't remember their name for their support in various way of those moments to see this projects come to life.

All this would have be very difficult if you don't have someone to believe in me thanks so much my Brother ( Kazeem Oladiji Akindiya) and to all rest of my families, friends.

i say AJose wa koni bajeeoo, iwaju , iwaju lope ebiti wa mama re si oo.layo lamama pade oo. see pupo ooo. modupedupe ope mi ko tan.

ASE YORI NI TIYIN O, NI TEMI OO, NI FUN GBOGBO WA000.  
IRE LO NI, IRE TITI AYE 000., GBOGBO WA LAMA FEYIN TI  
JE ISE OWO WA LAYO ATI NI ALAFIA OO.